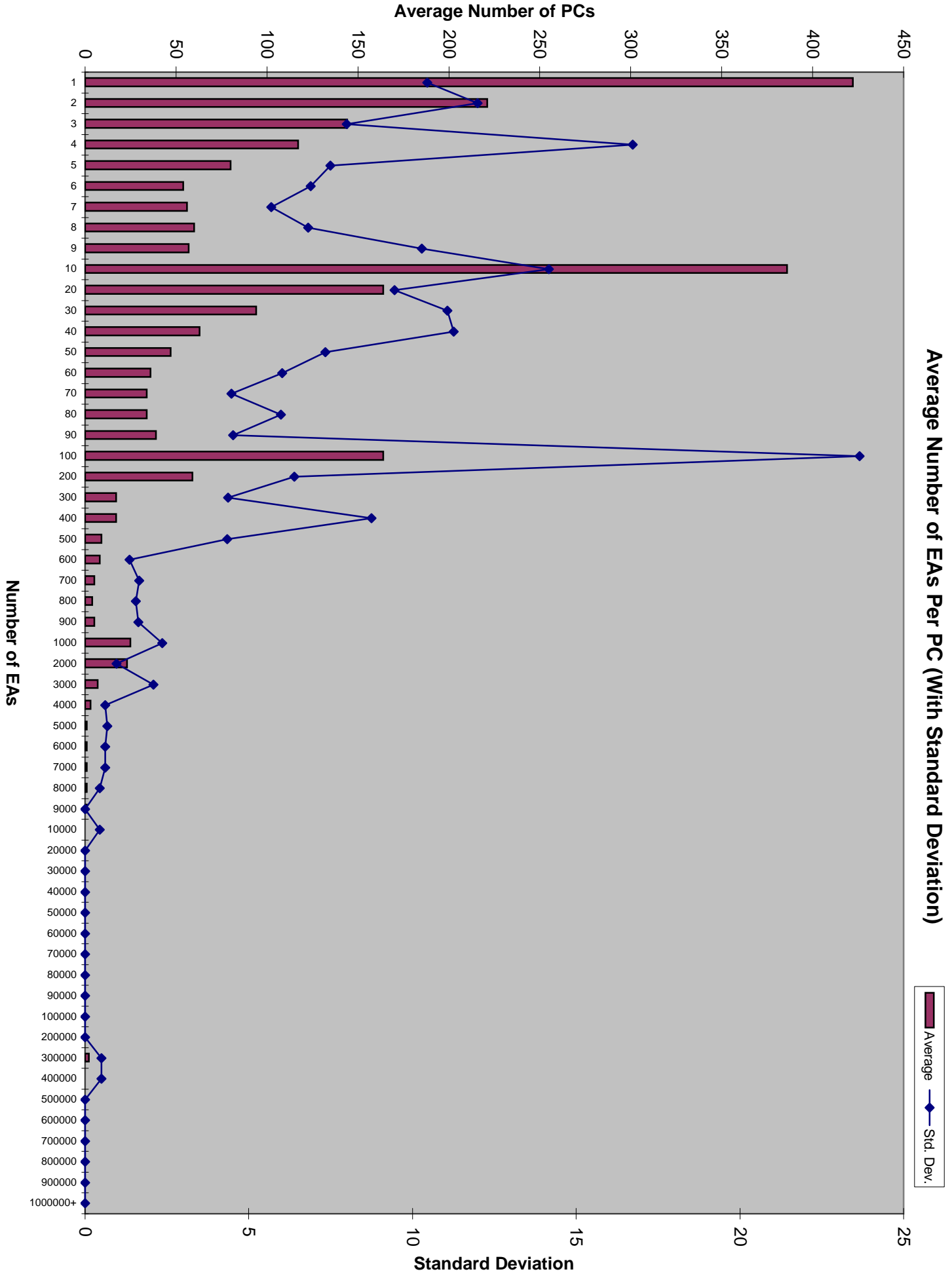


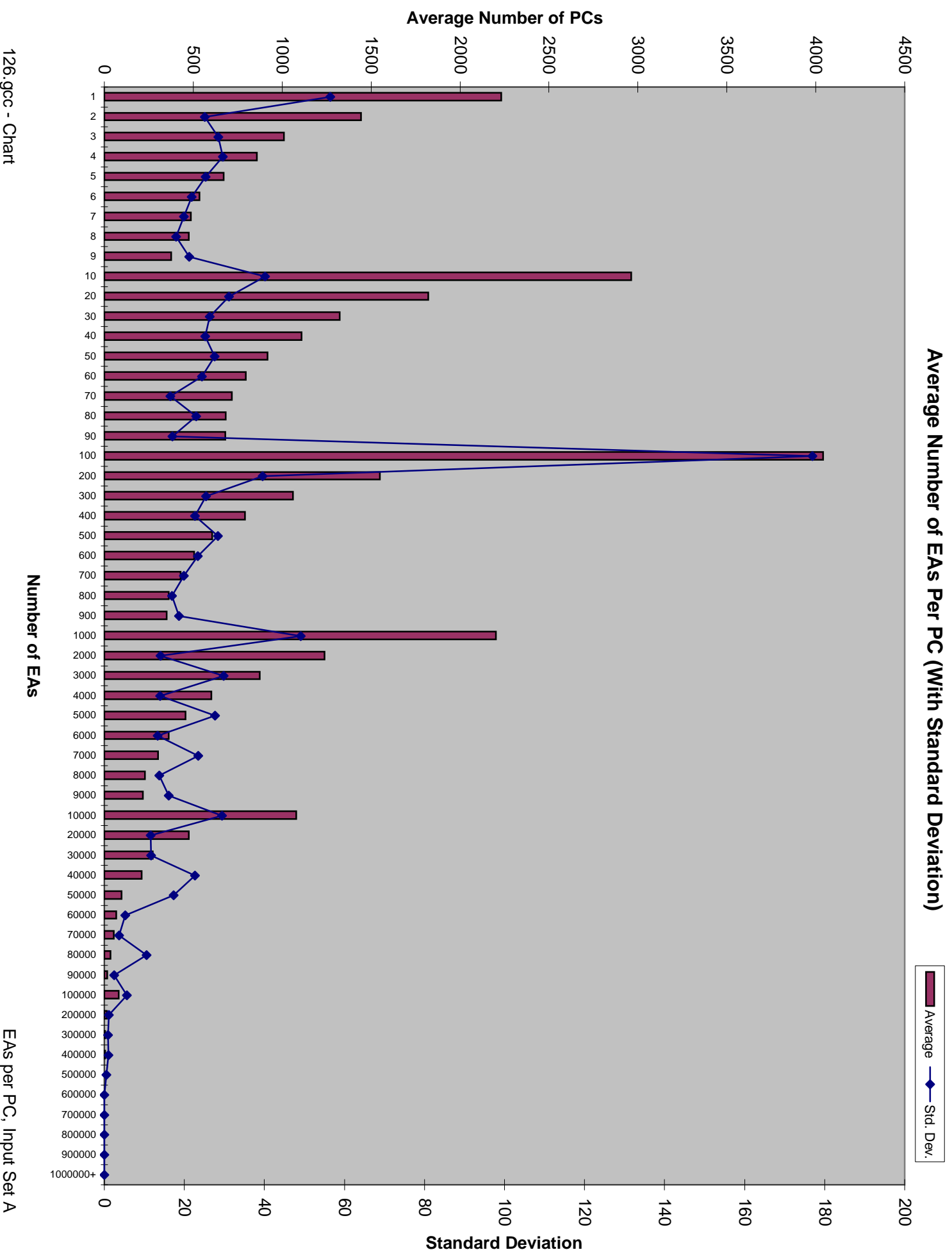
Average Number of EAS Per PC (With Standard Deviation)

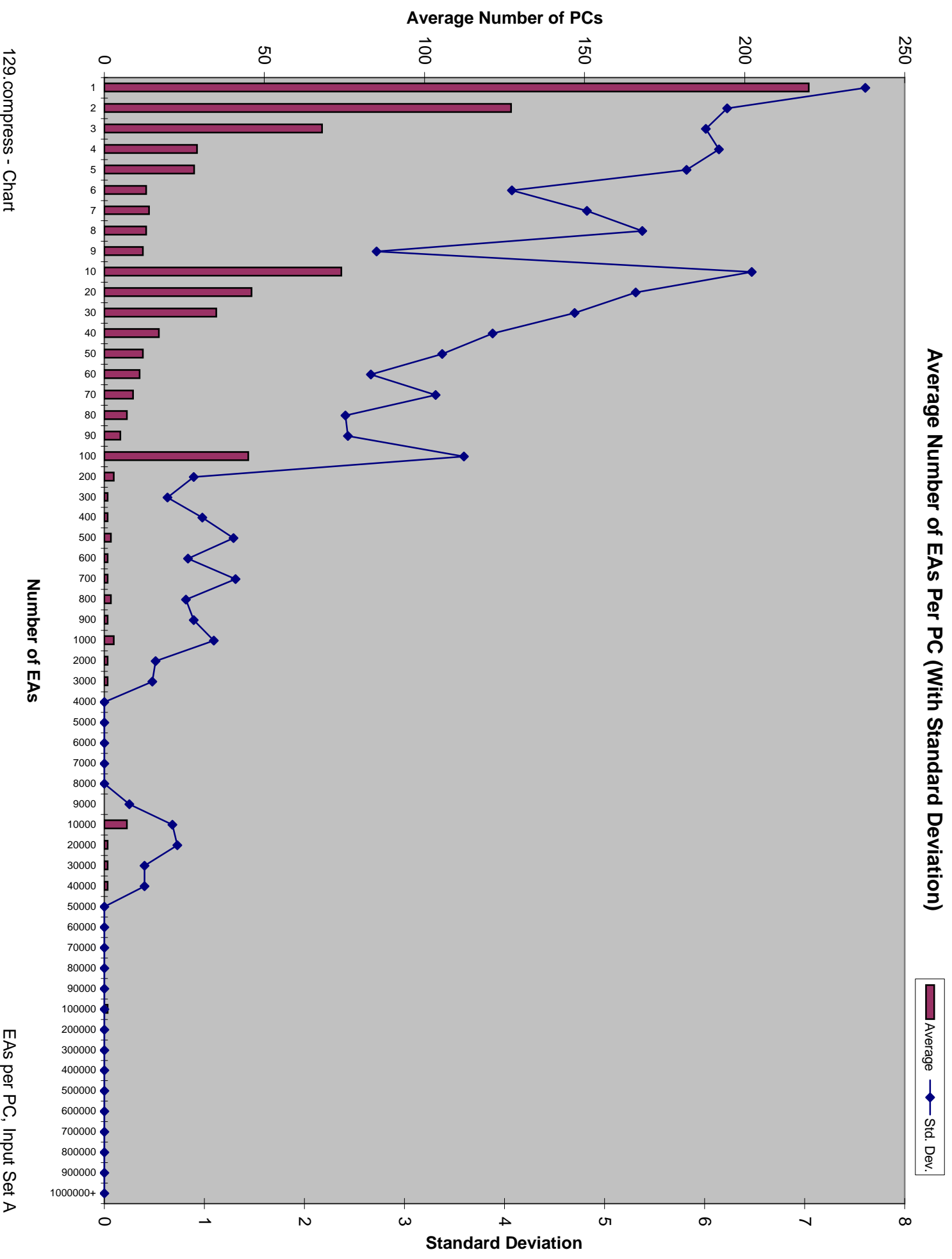
Average — Std. Dev.

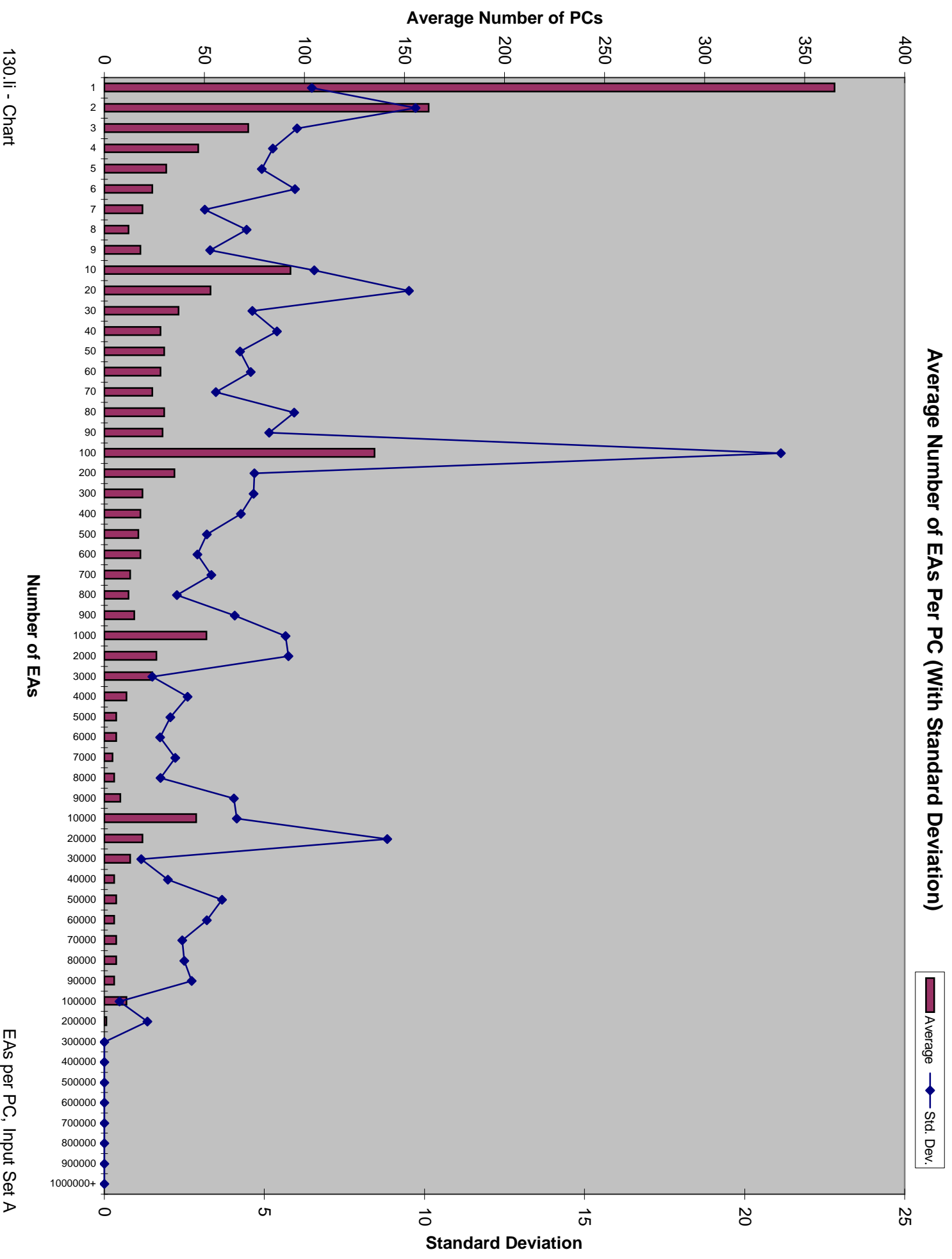


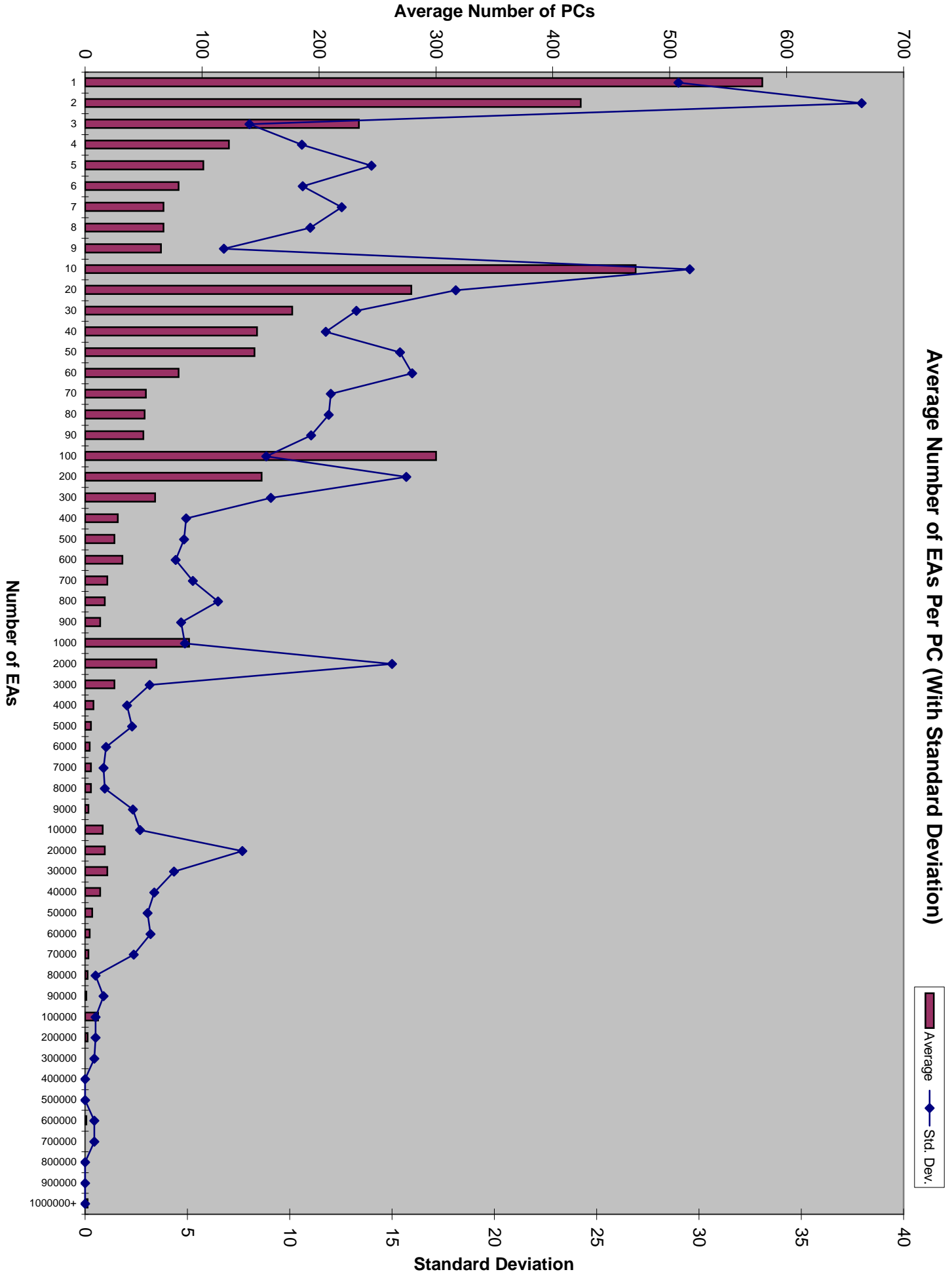
Average Number of EAs Per PC (With Standard Deviation)

Average (dark red bar) Std. Dev. (blue line with diamond)



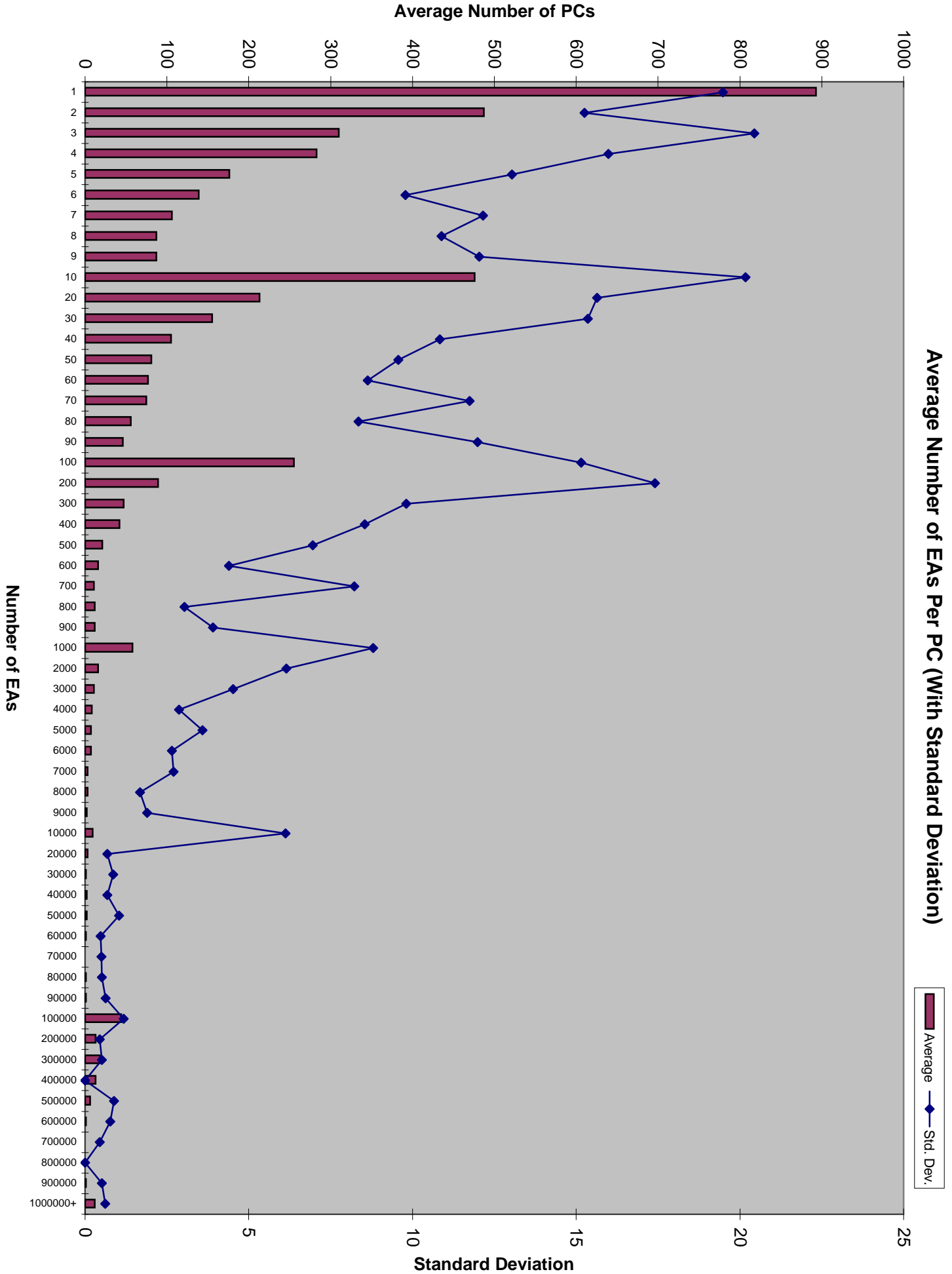


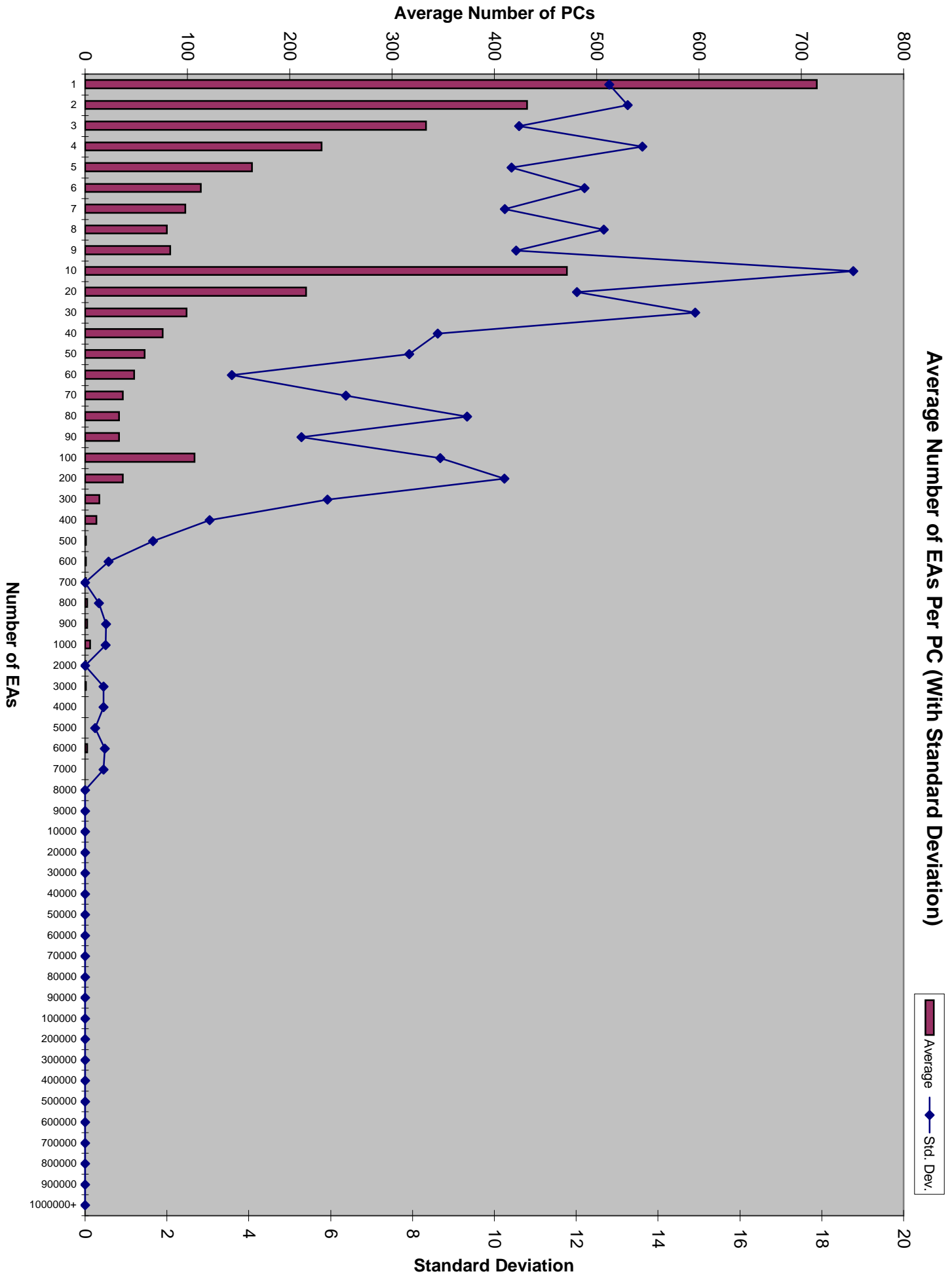


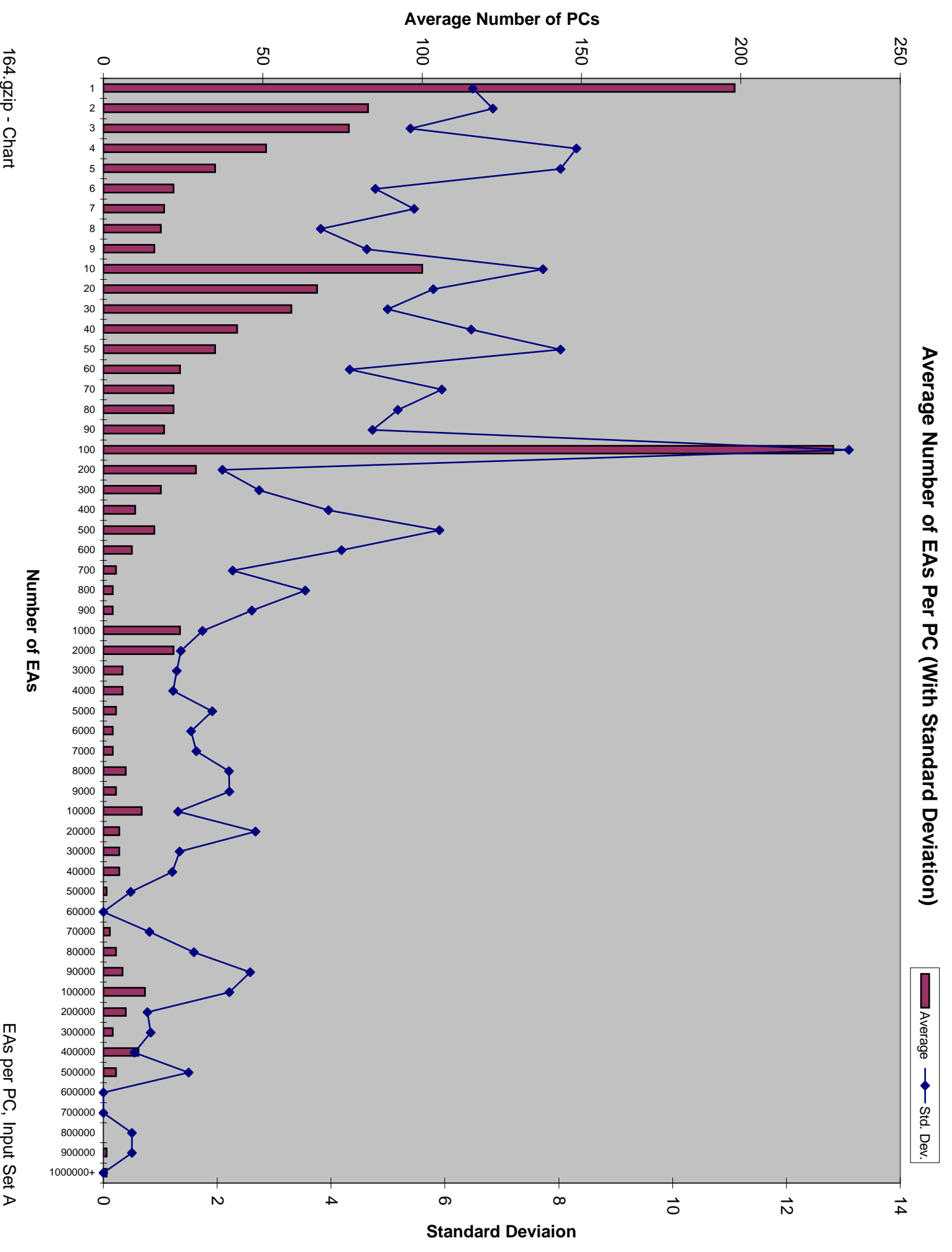


Average Number of EAS Per PC (With Standard Deviation)

Legend:
Average (Maroon Bar)
Std. Dev. (Blue Line with Diamond)

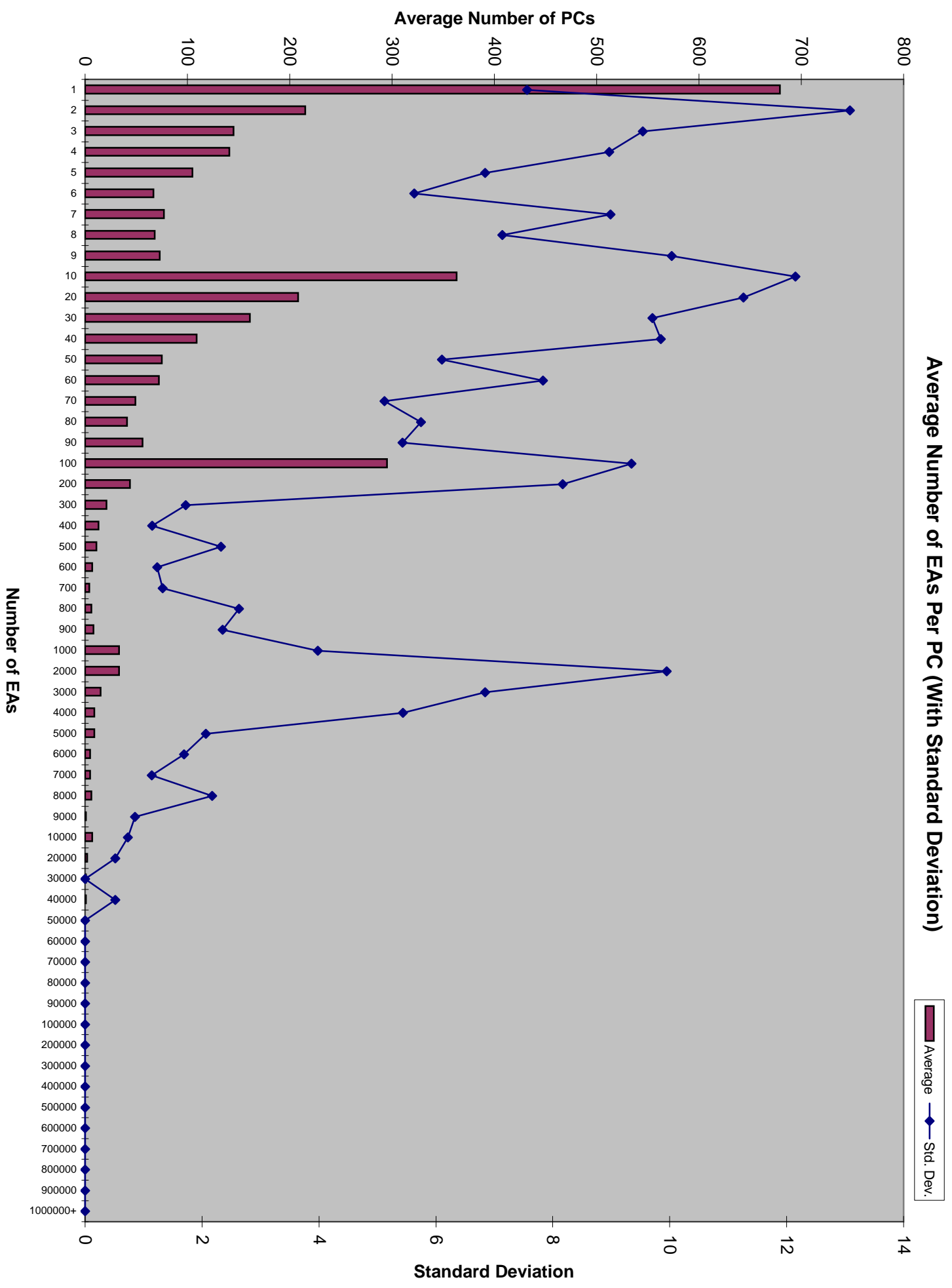




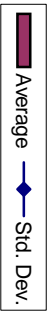


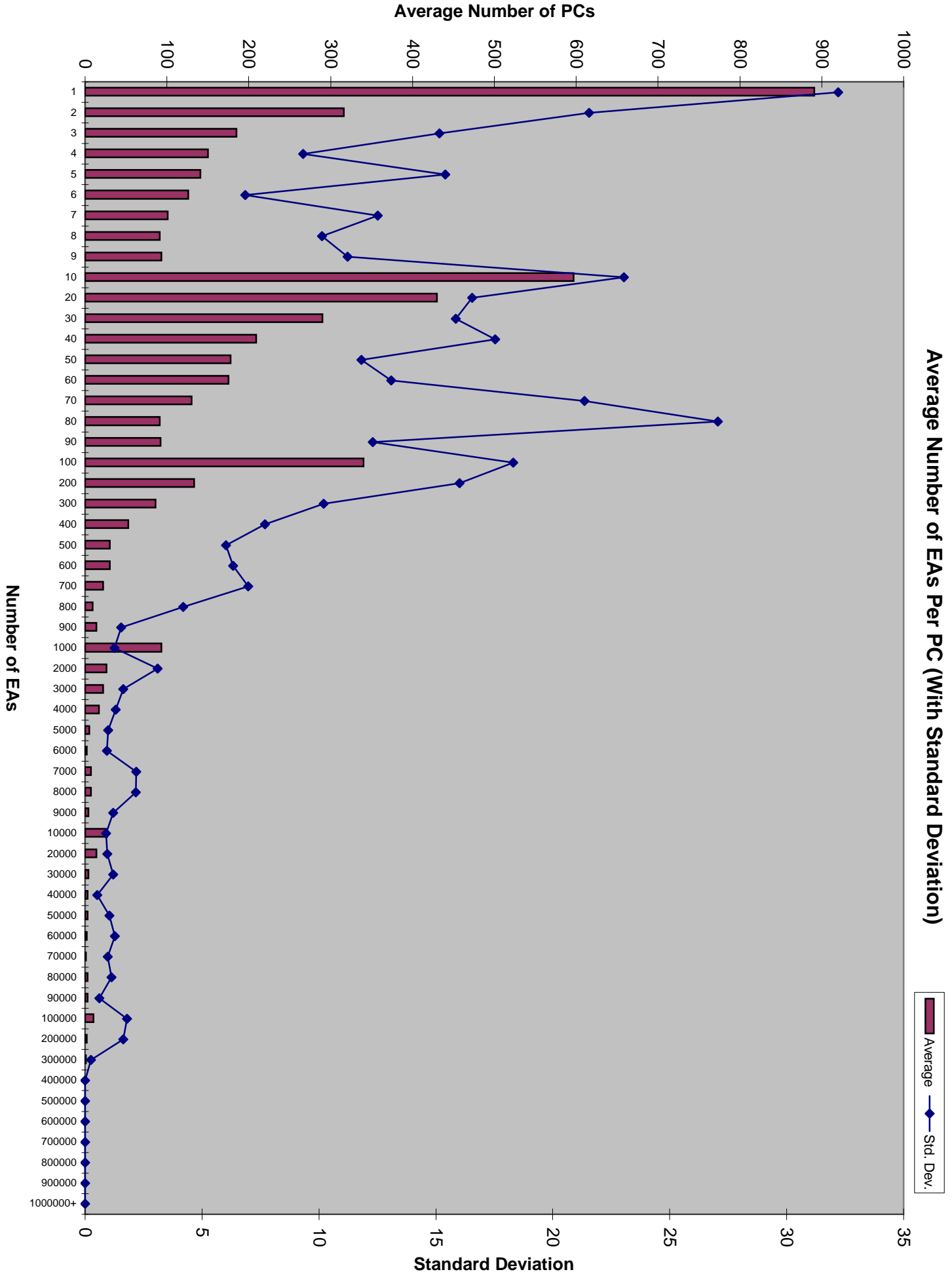
164.gzip - Chart

EAs per PC, Input Set A

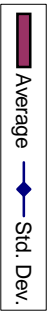


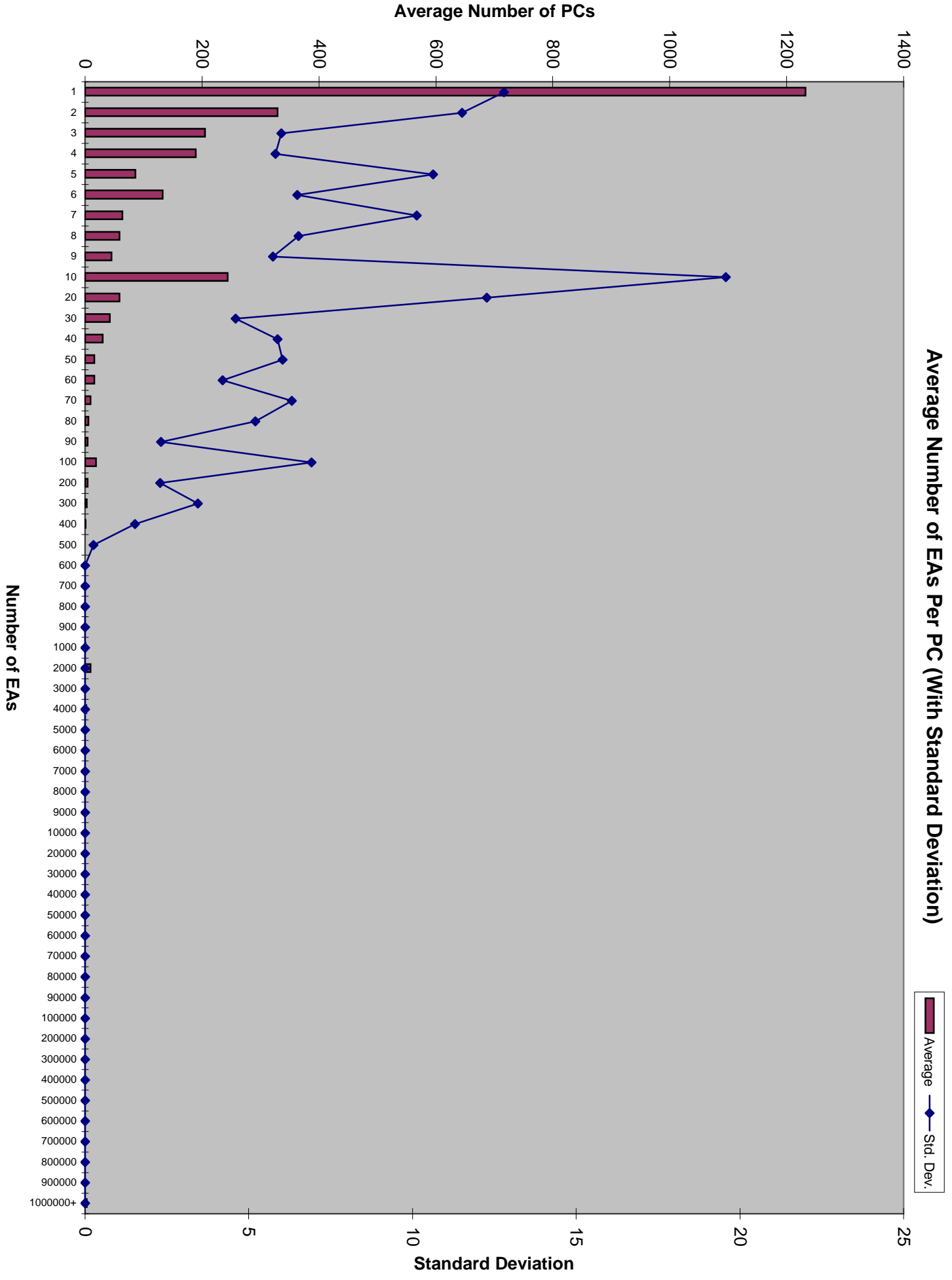
Average Number of EAs Per PC (With Standard Deviation)





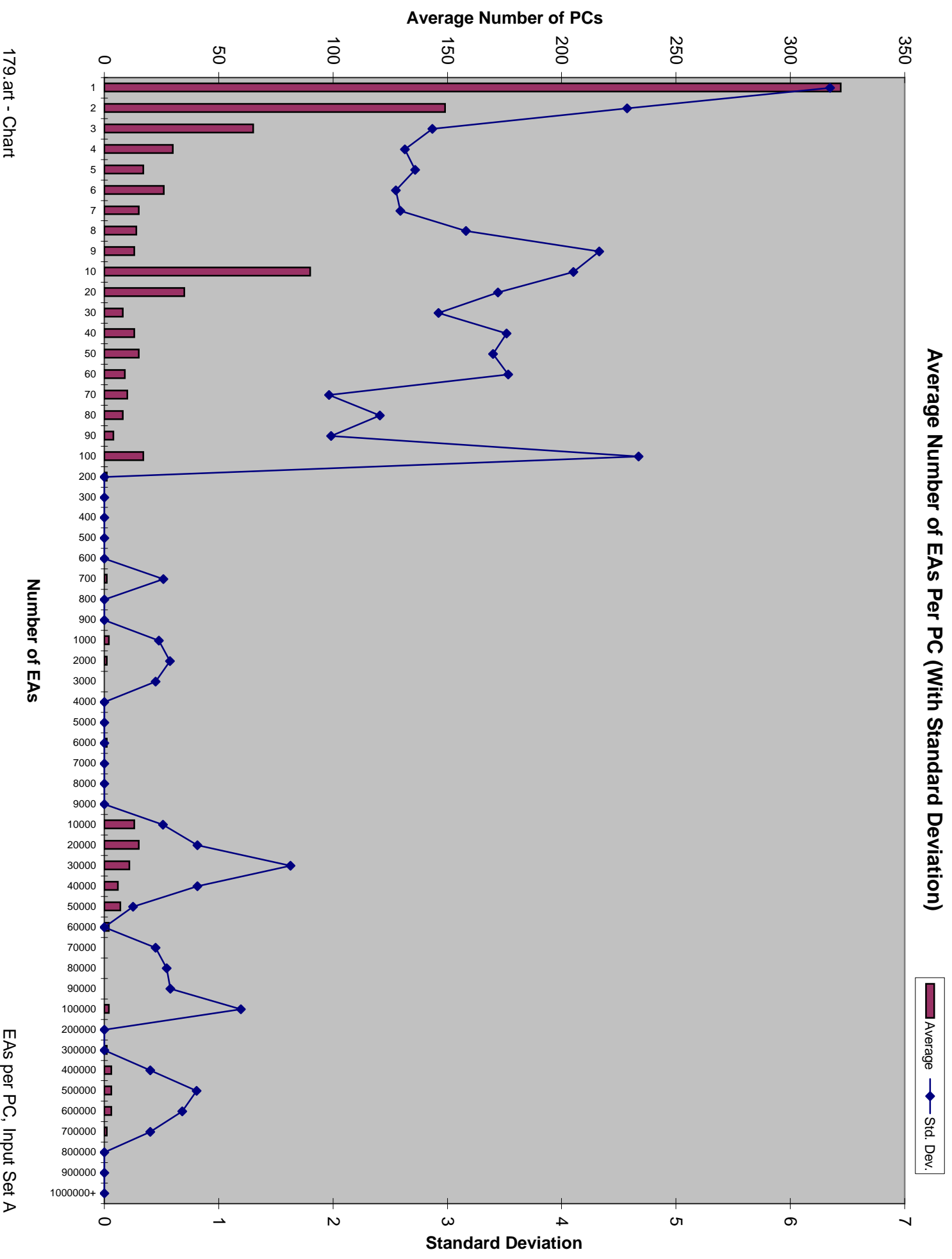
Average Number of EAS Per PC (With Standard Deviation)



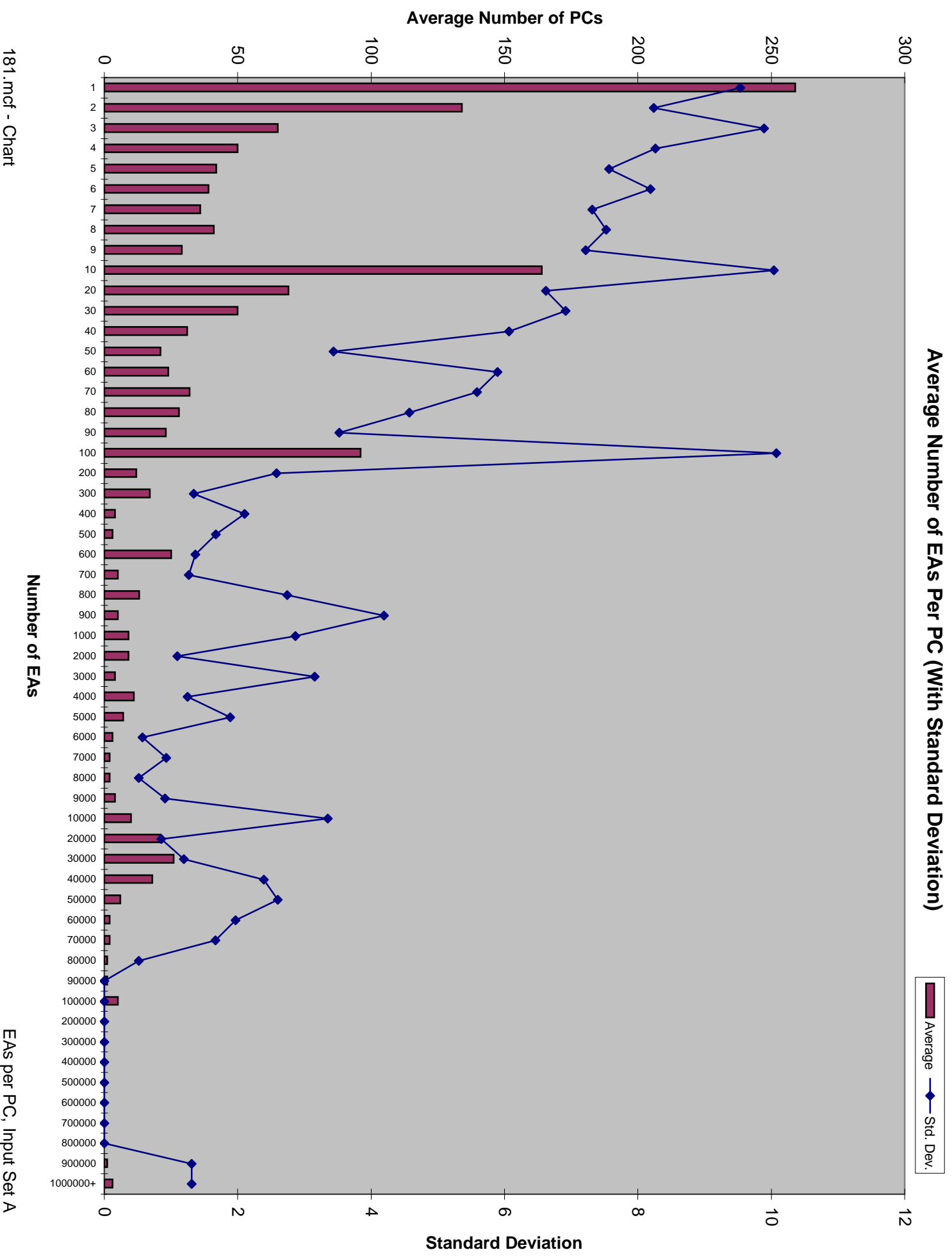


Average Number of EAS Per PC (With Standard Deviation)

Average (Bar) Std. Dev. (Line with Diamond)

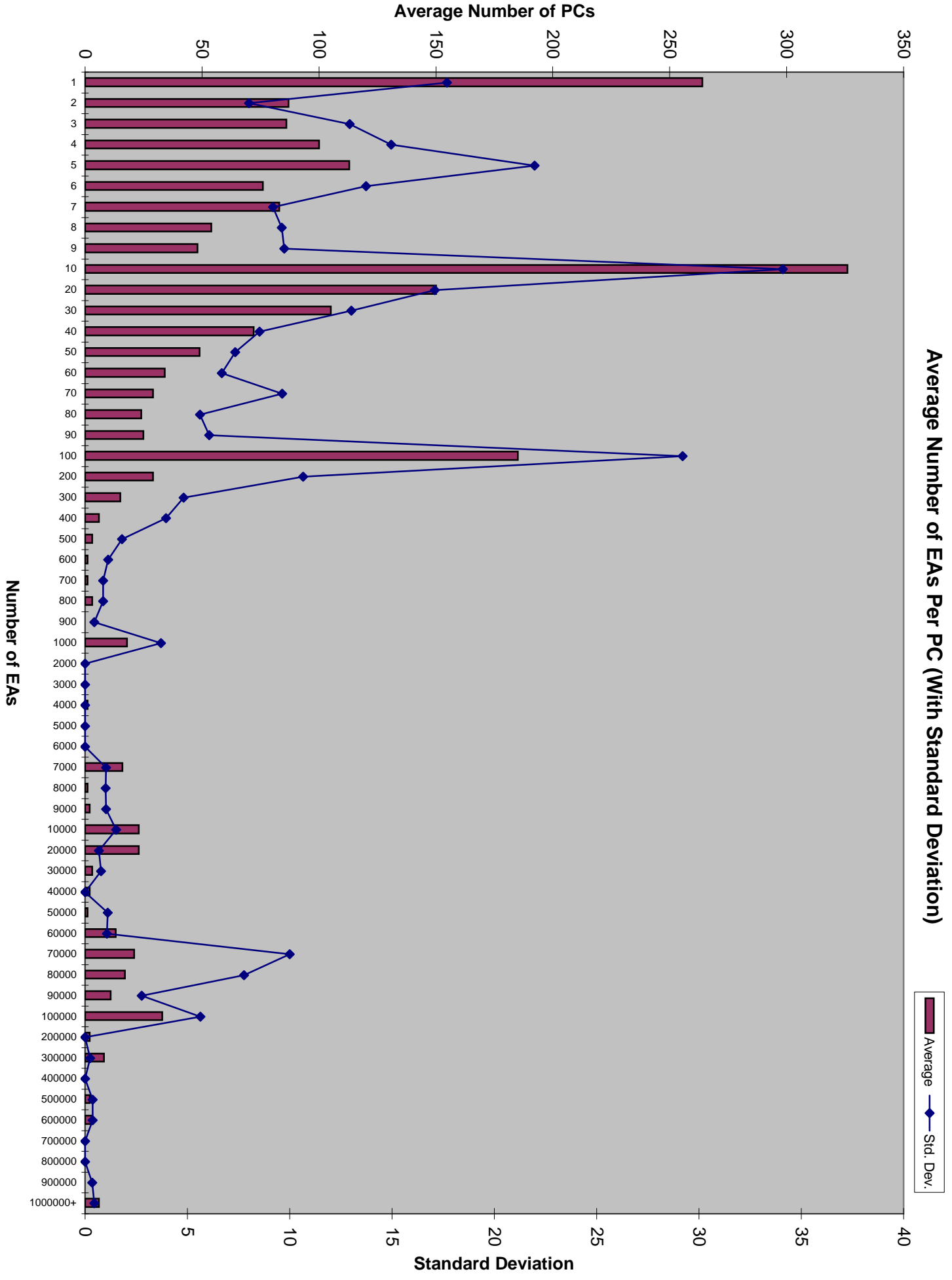


179.art - Chart



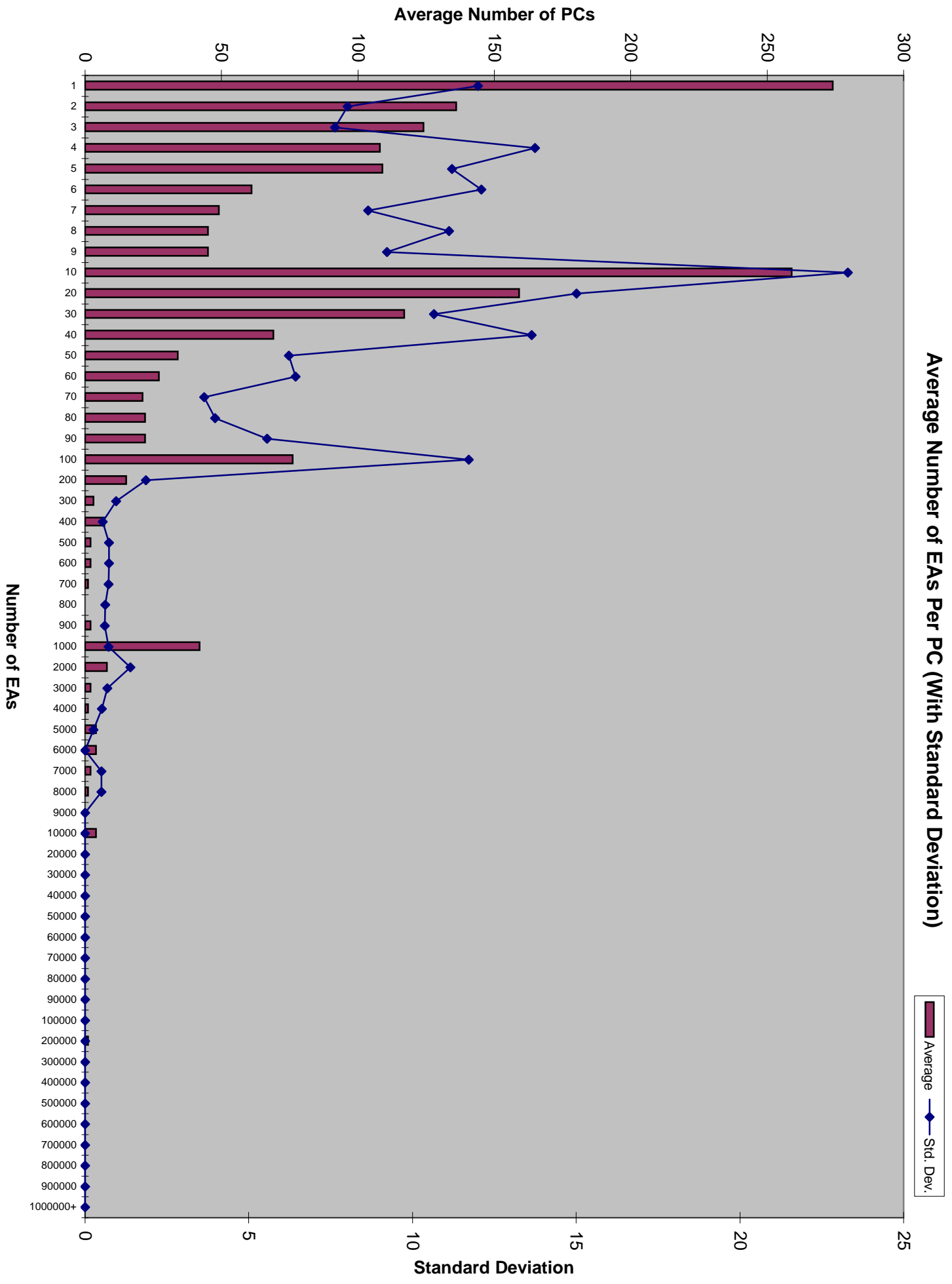
181.mcf - Chart

EAs per PC, Input Set A



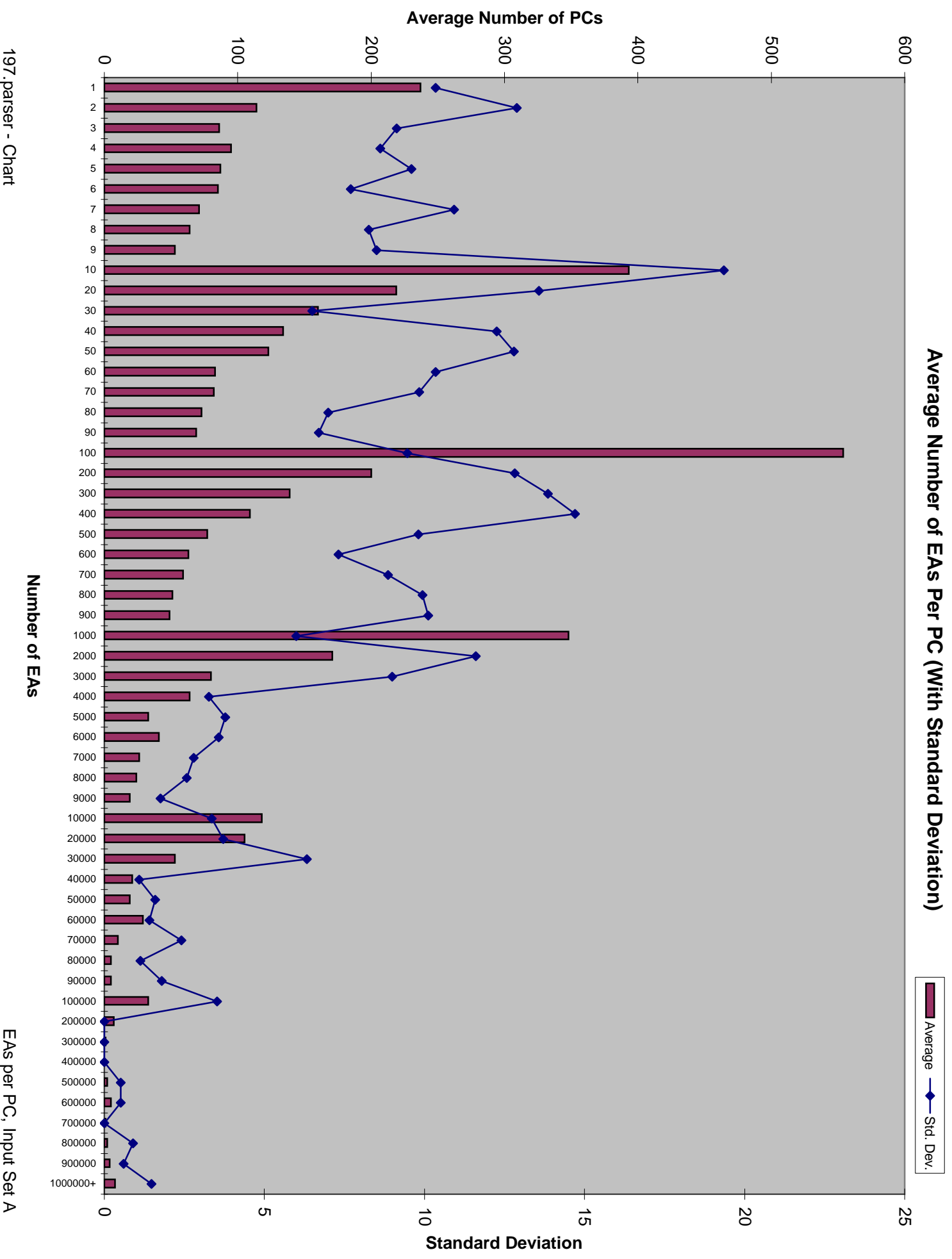
Average Number of EAS Per PC (With Standard Deviation)

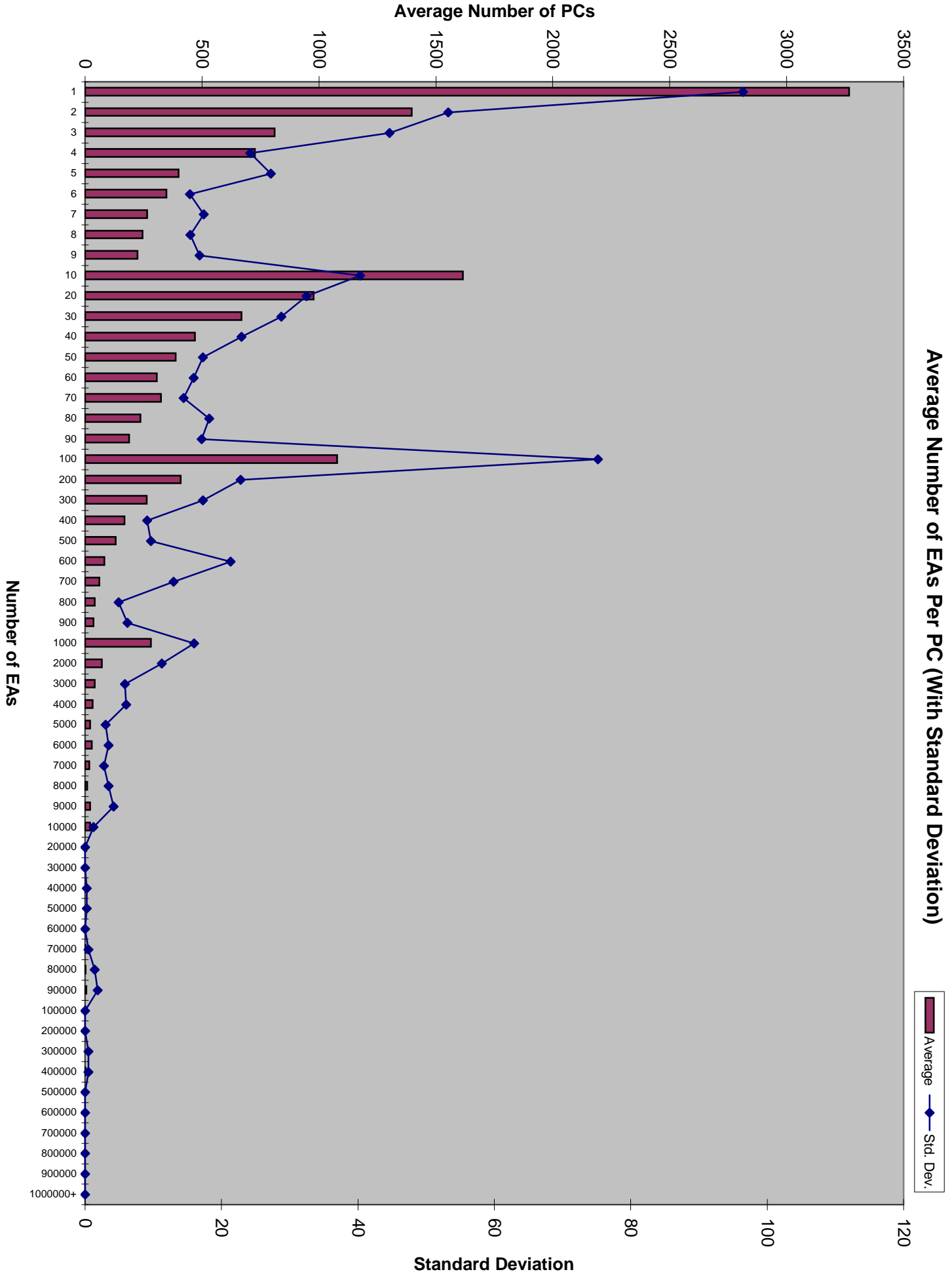
Average (red bar) Std. Dev. (blue line with diamonds)



Average Number of EAS Per PC (With Standard Deviation)

Average (Maroon Bar) Std. Dev. (Blue Line with Diamond)





Average Number of EAS Per PC (With Standard Deviation)

Average (red bar) Std. Dev. (blue line with diamonds)

