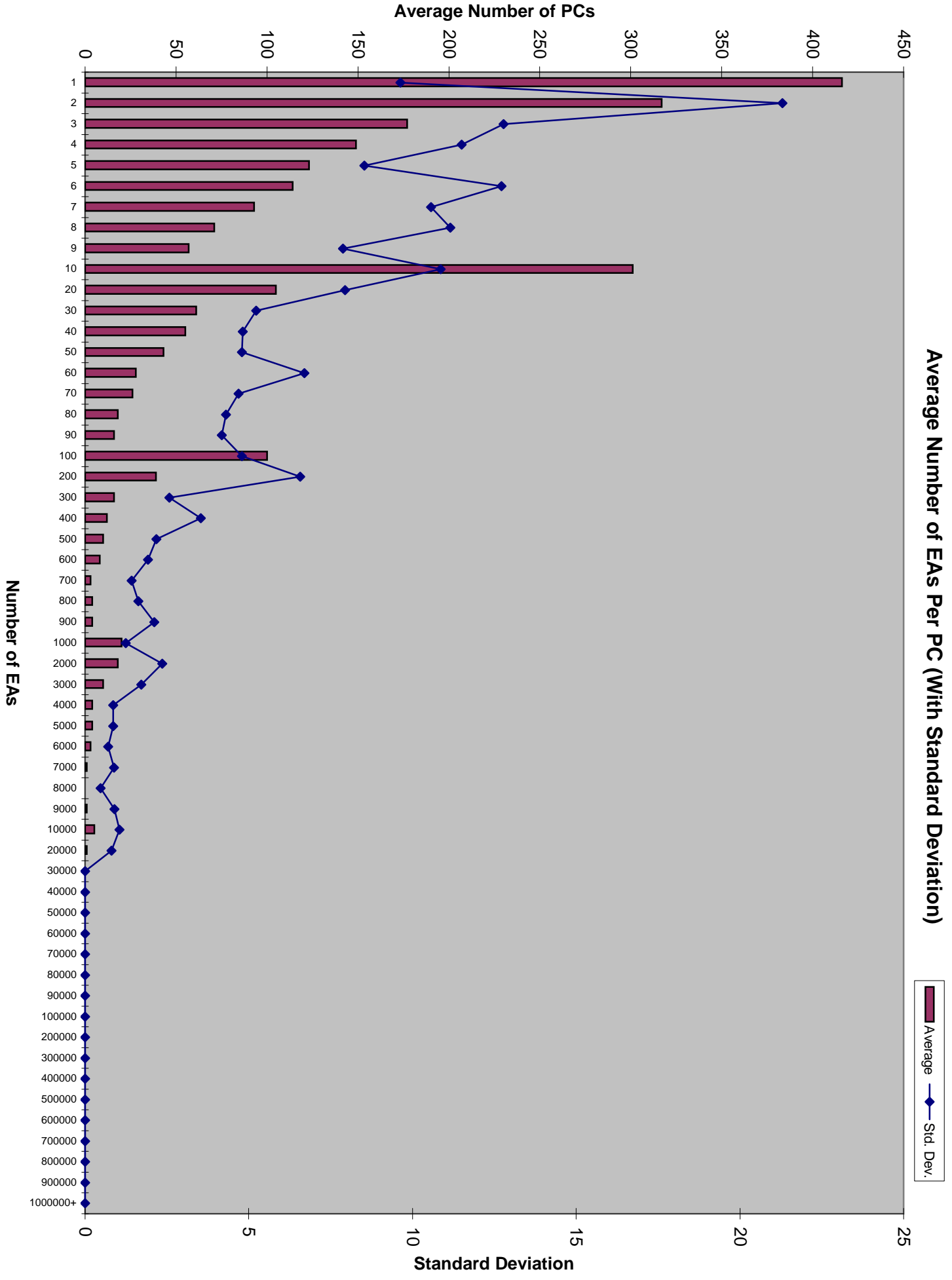


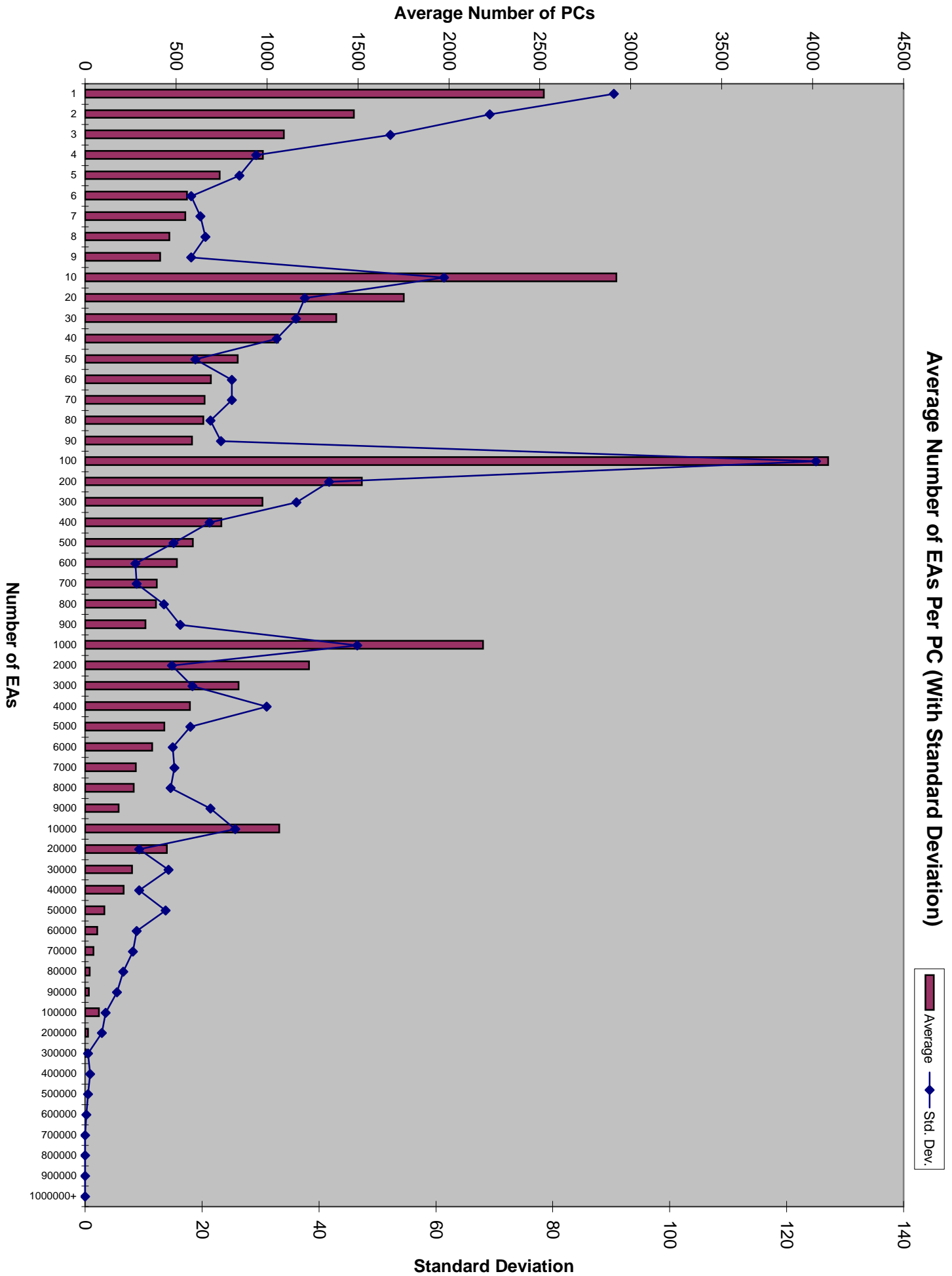
Average Number of EAS Per PC (With Standard Deviation)

Average (red bar) Std. Dev. (blue line with diamonds)



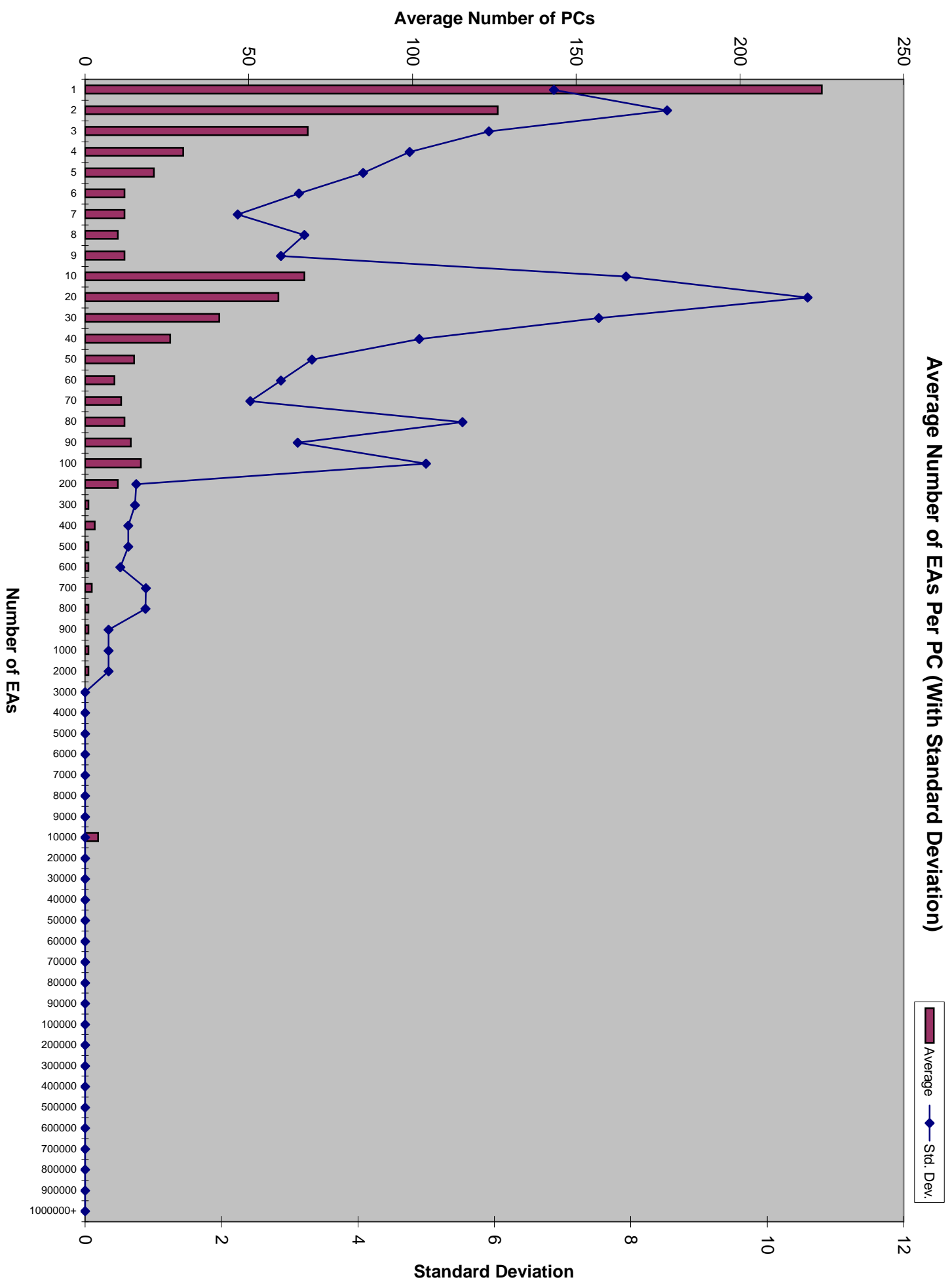
Average Number of EAS Per PC (With Standard Deviation)

Average (dark red bar) Std. Dev. (blue line with diamond)



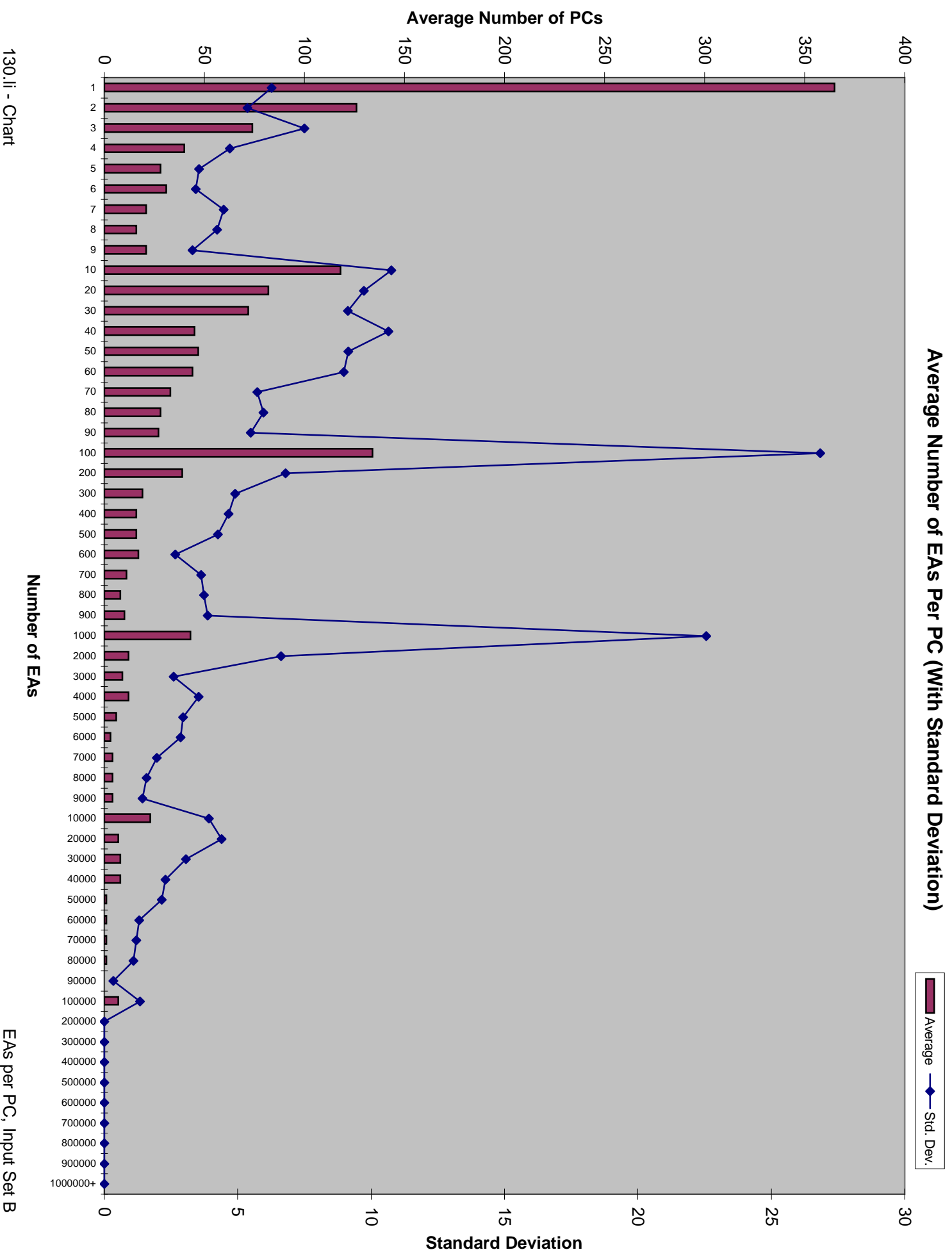
Average Number of EAS Per PC (With Standard Deviation)

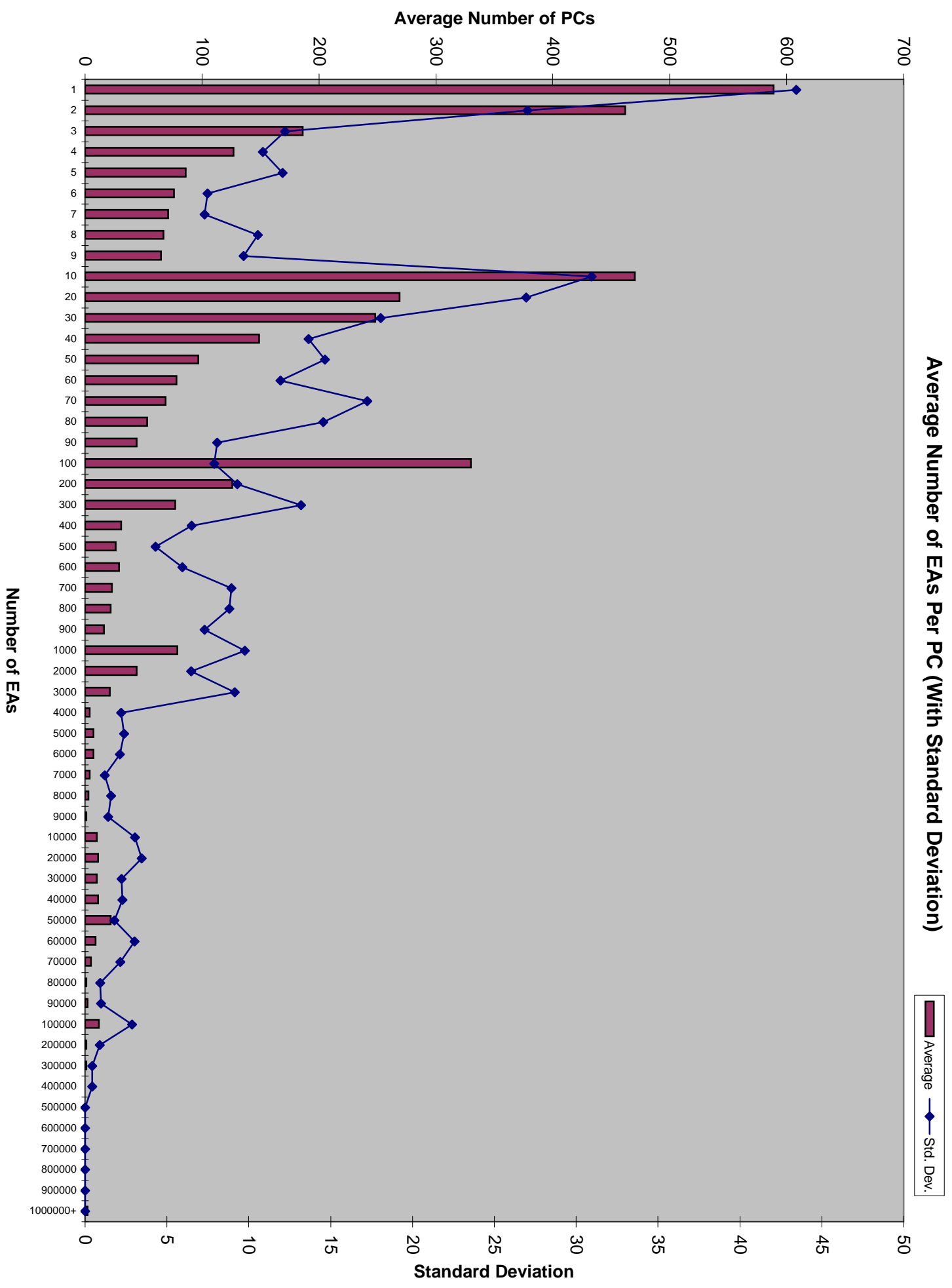
Average (red bar) Std. Dev. (blue line with diamonds)



Average Number of EAs Per PC (With Standard Deviation)

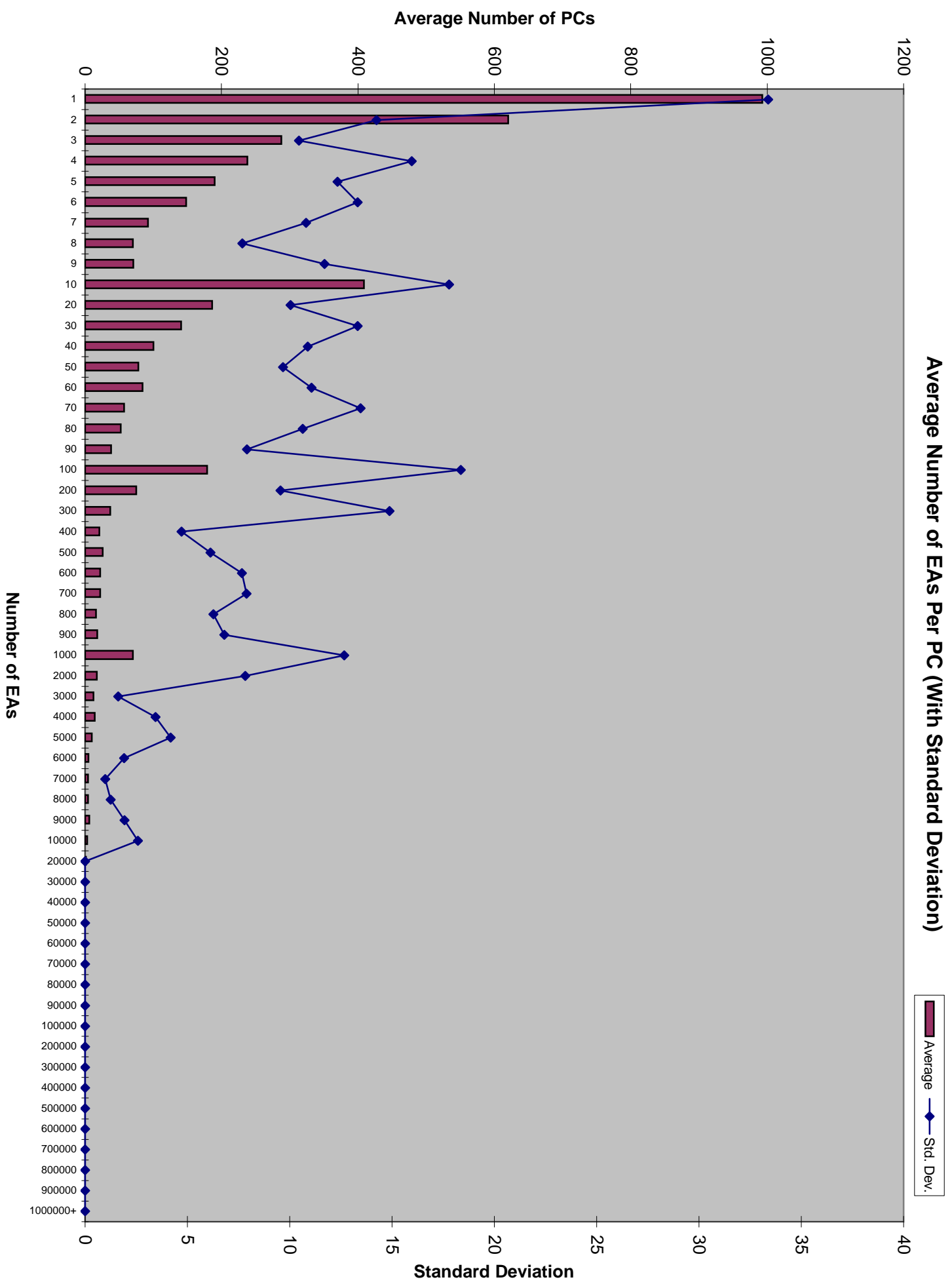
Average — Std. Dev.

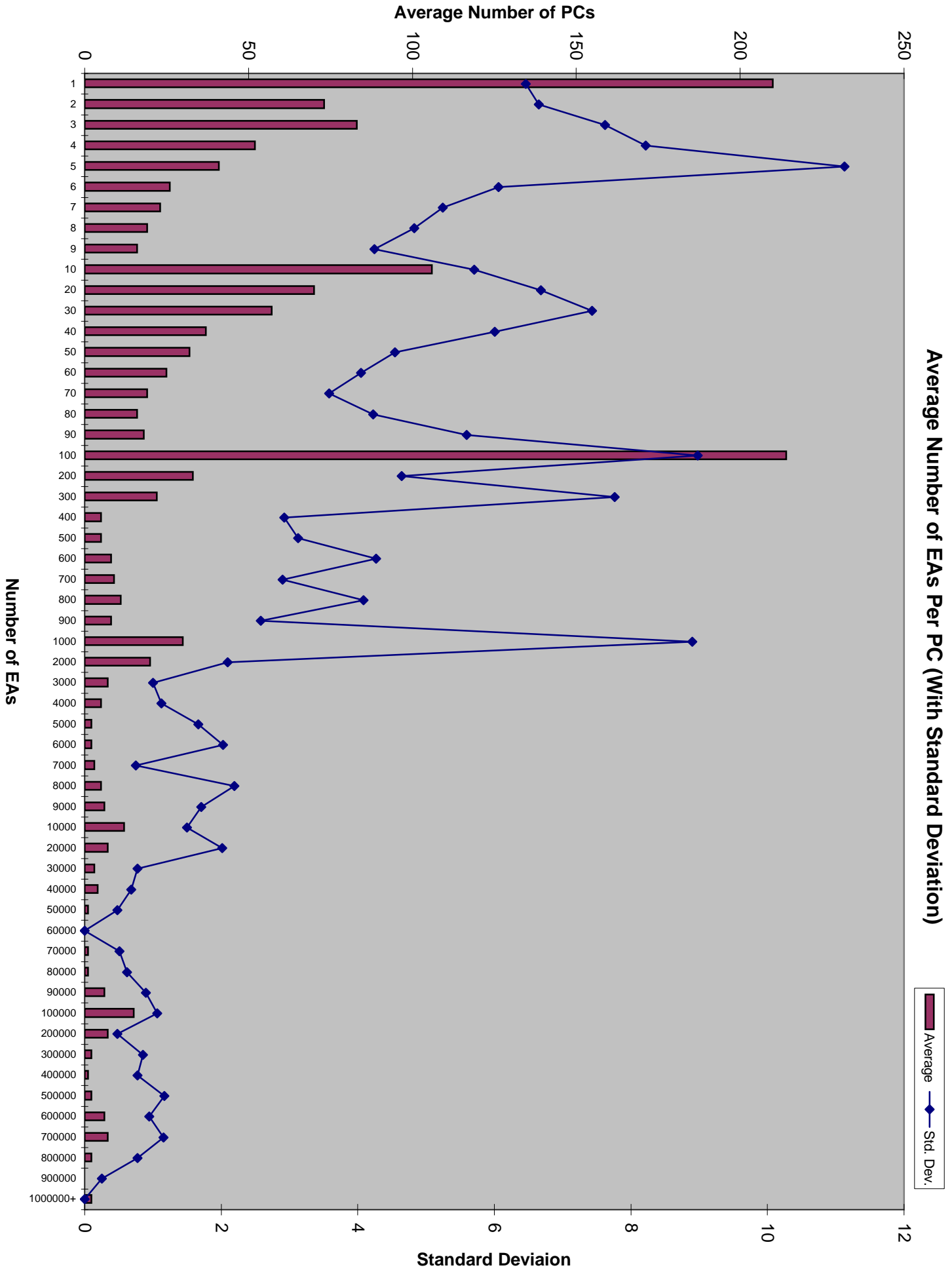




Average Number of EAS Per PC (With Standard Deviation)

Legend:  
Average (Maroon Bar)  
Std. Dev. (Blue Line with Diamond)

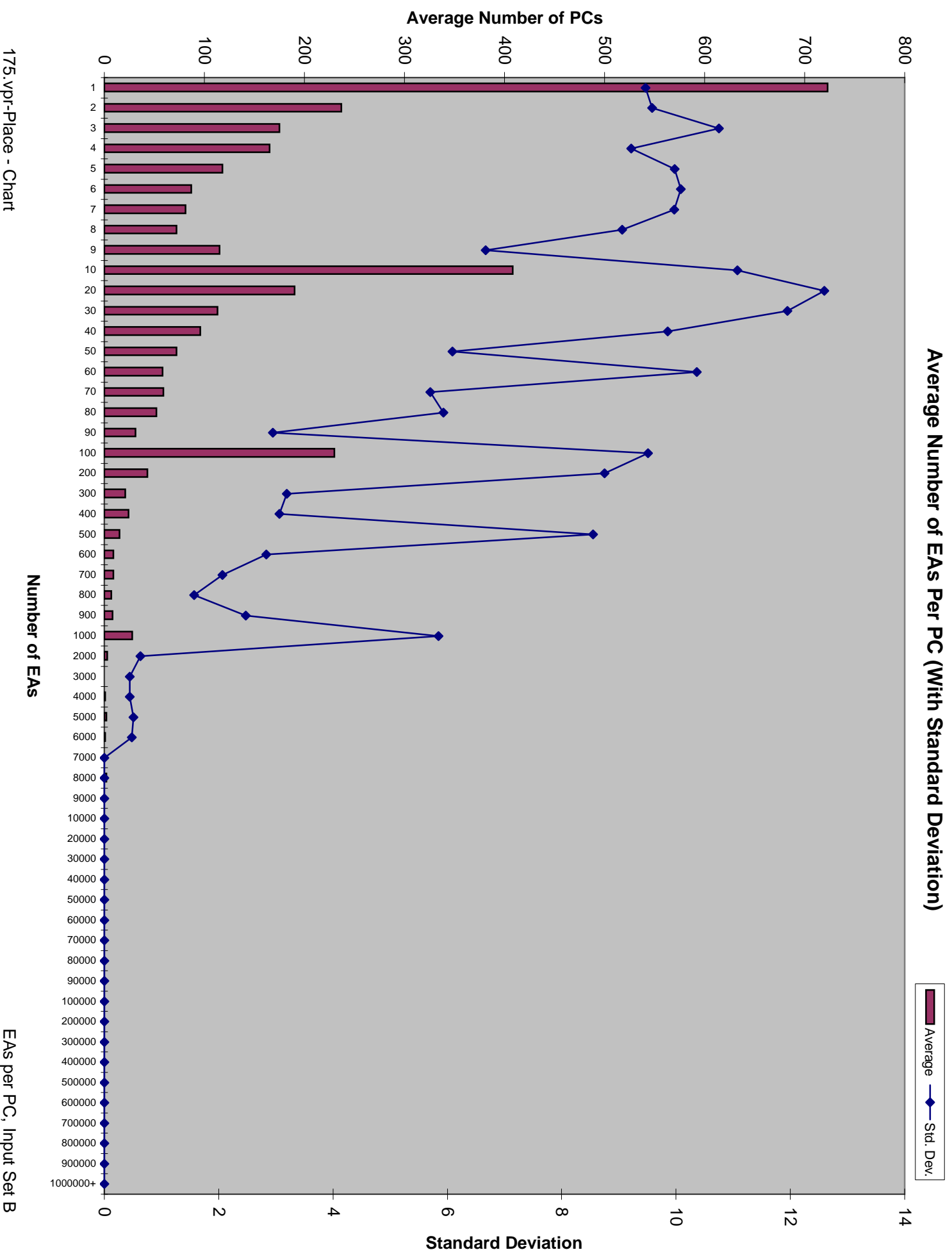


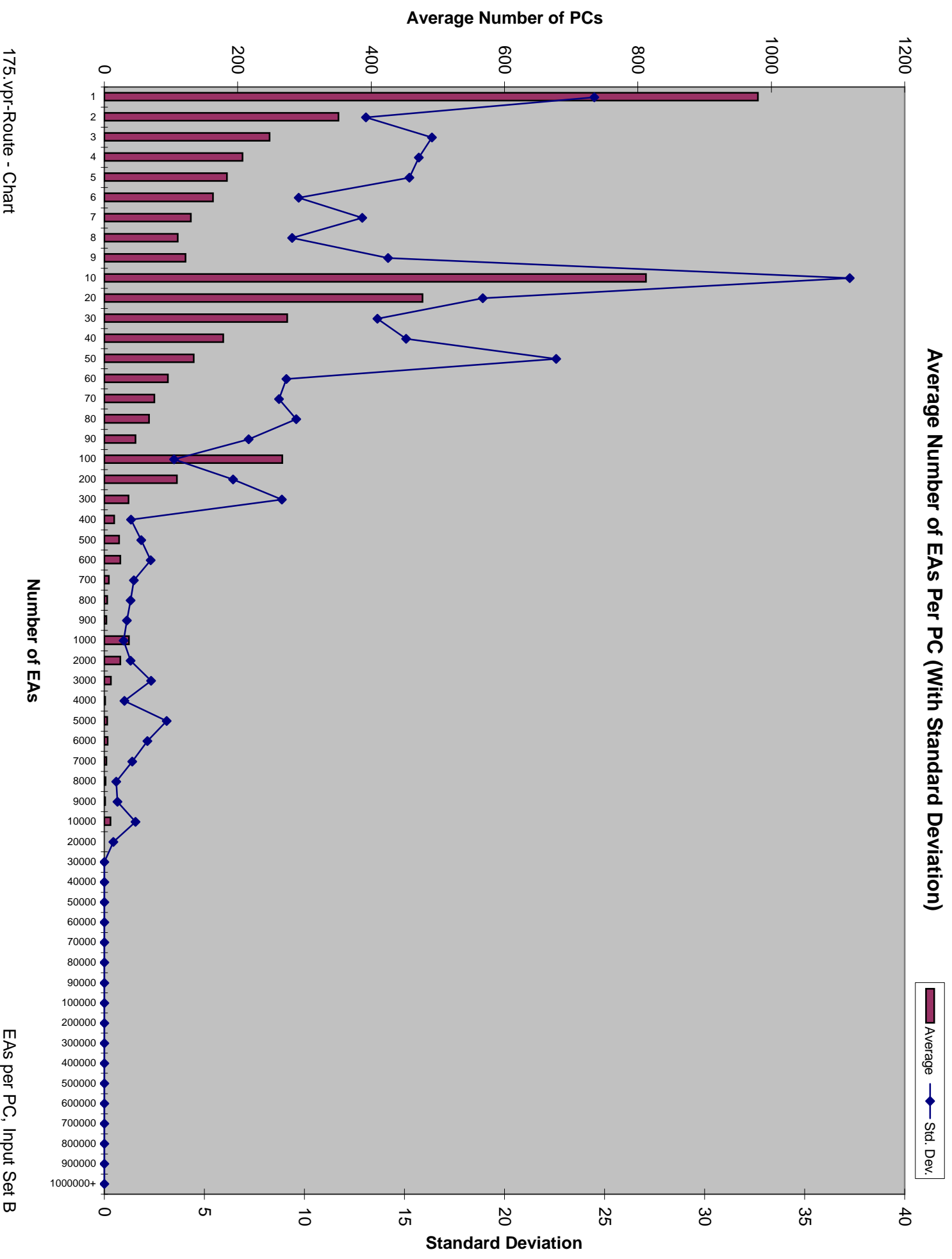


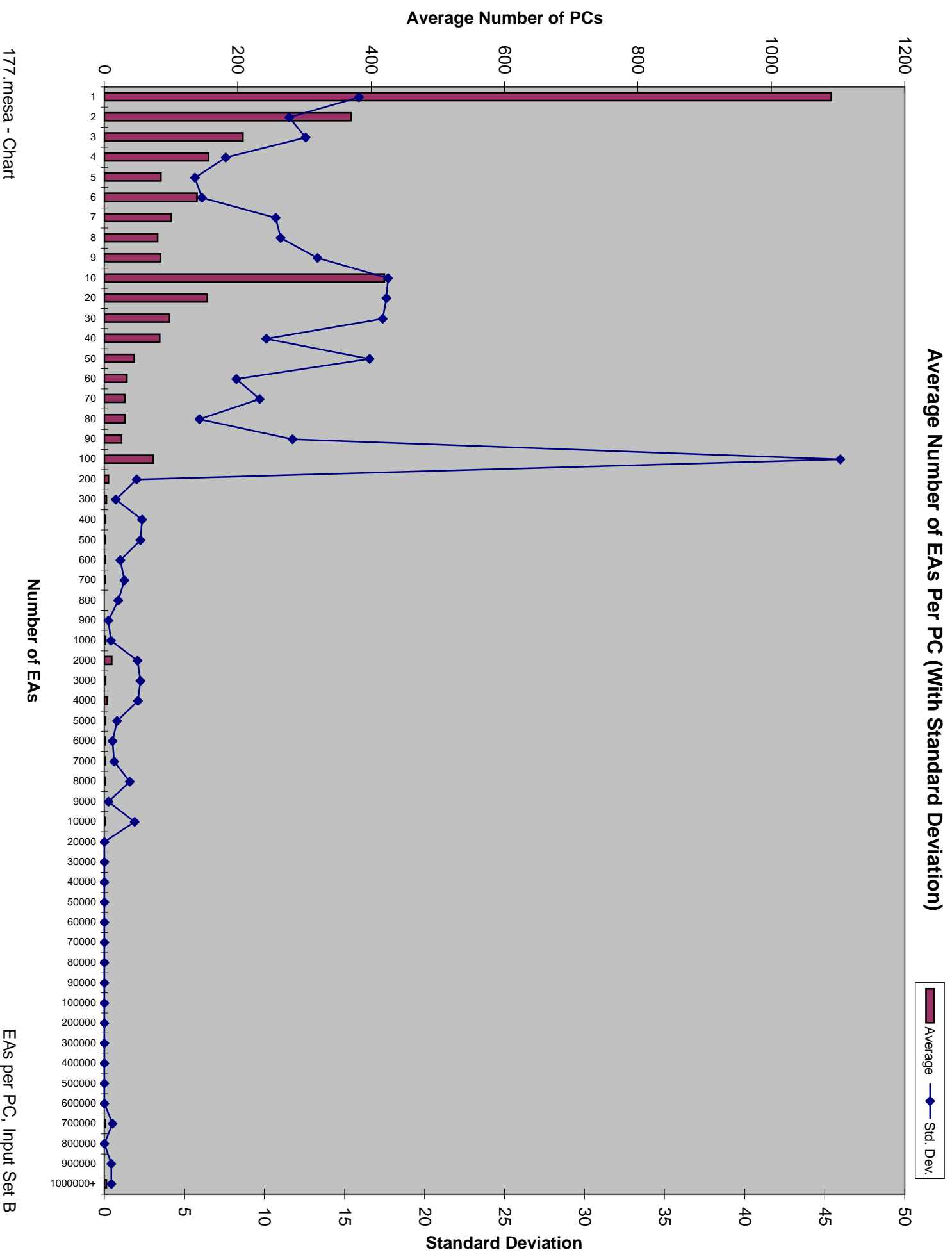
Average Number of EAs Per PC (With Standard Deviation)

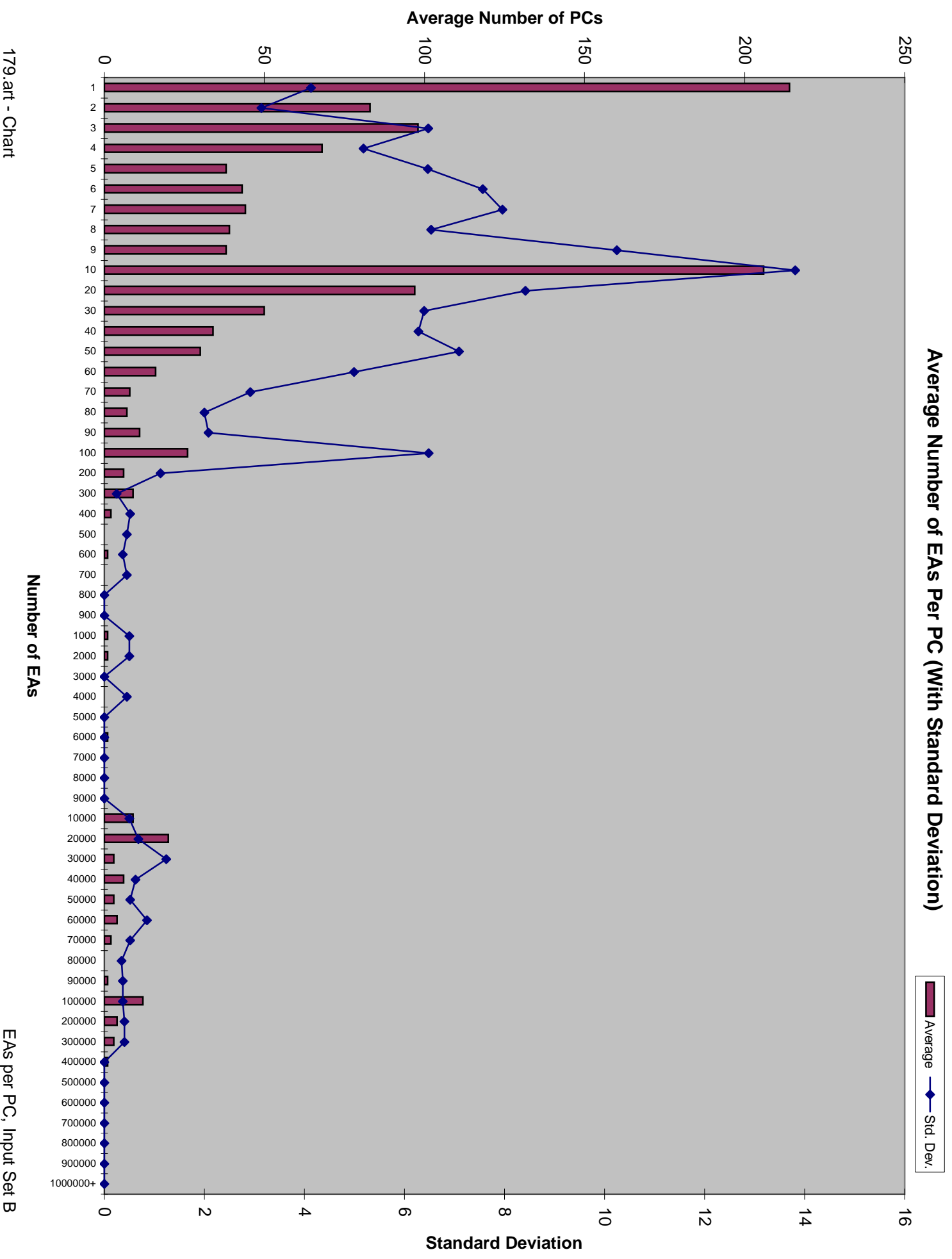
Legend: Average (maroon bar), Std. Dev. (blue line with diamond)

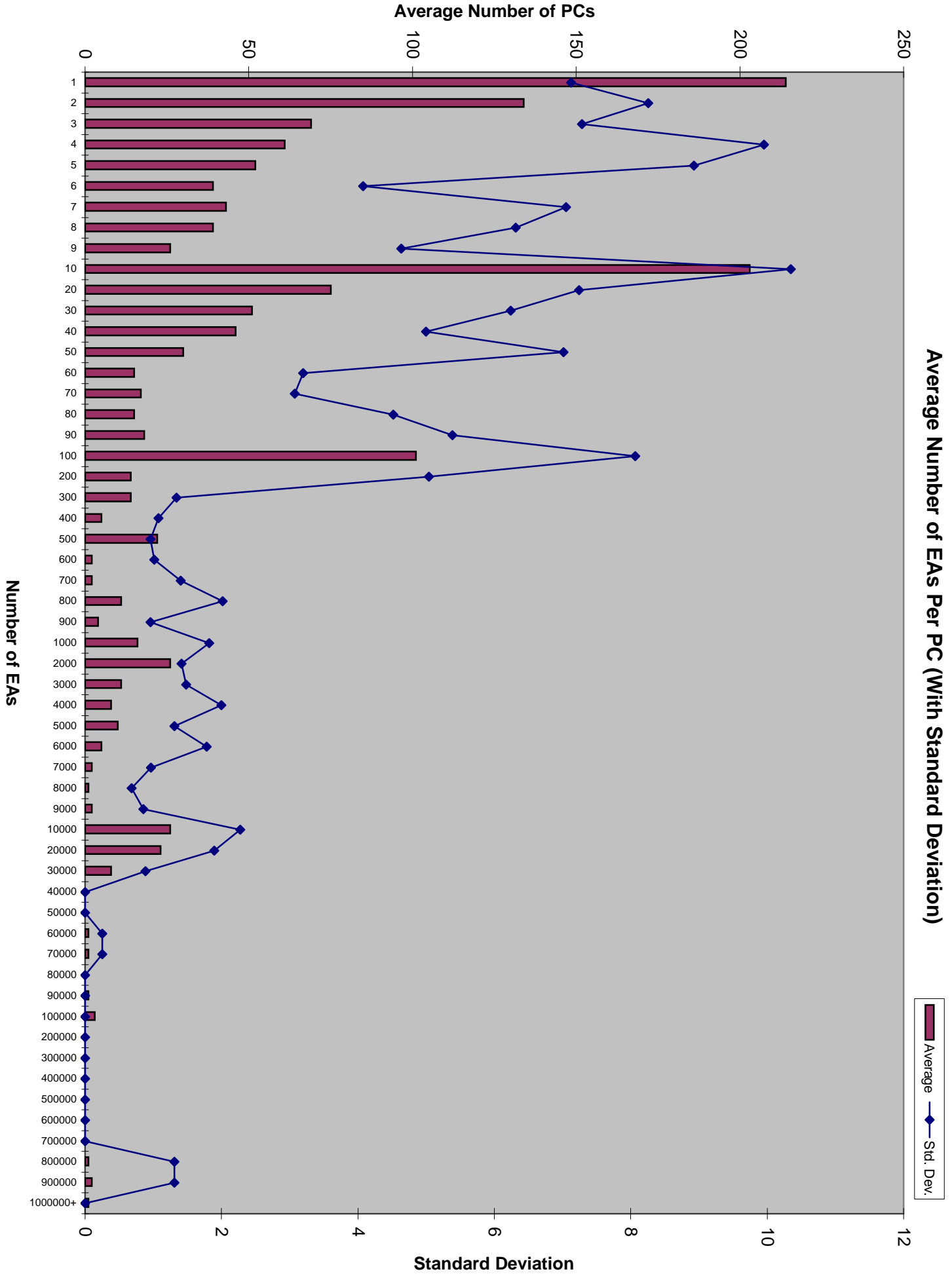






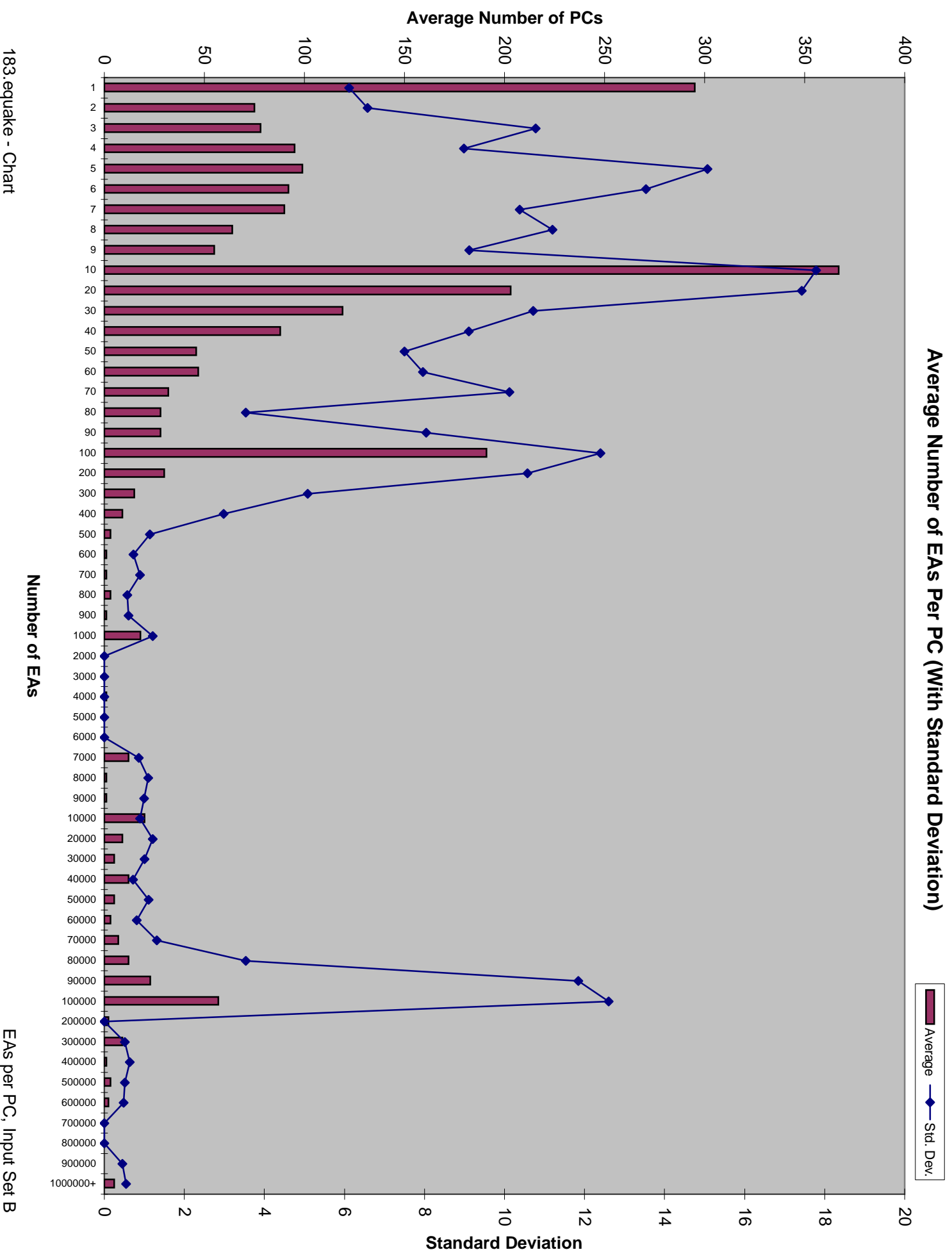




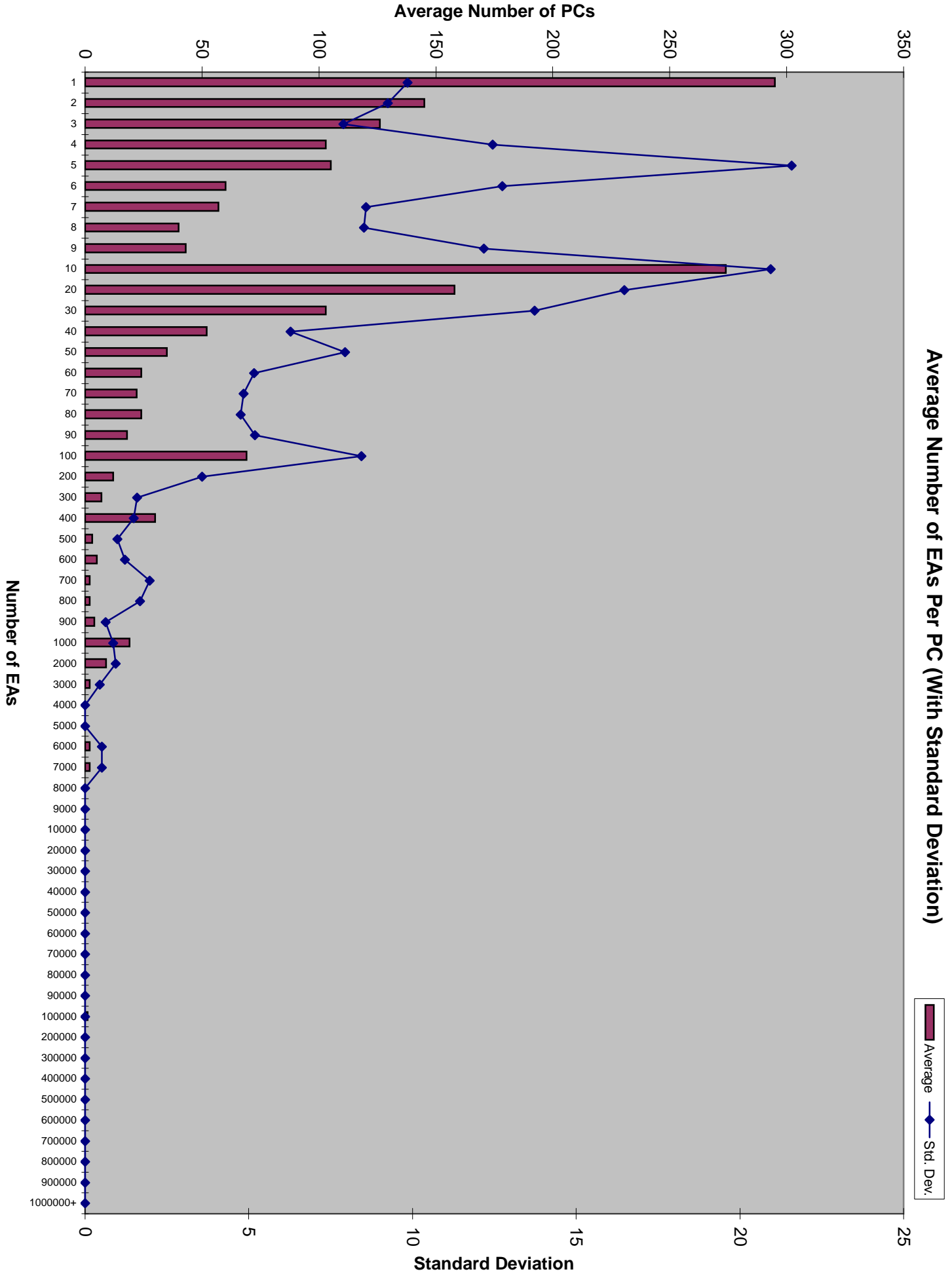


Average Number of EAS Per PC (With Standard Deviation)

Average — Std. Dev.

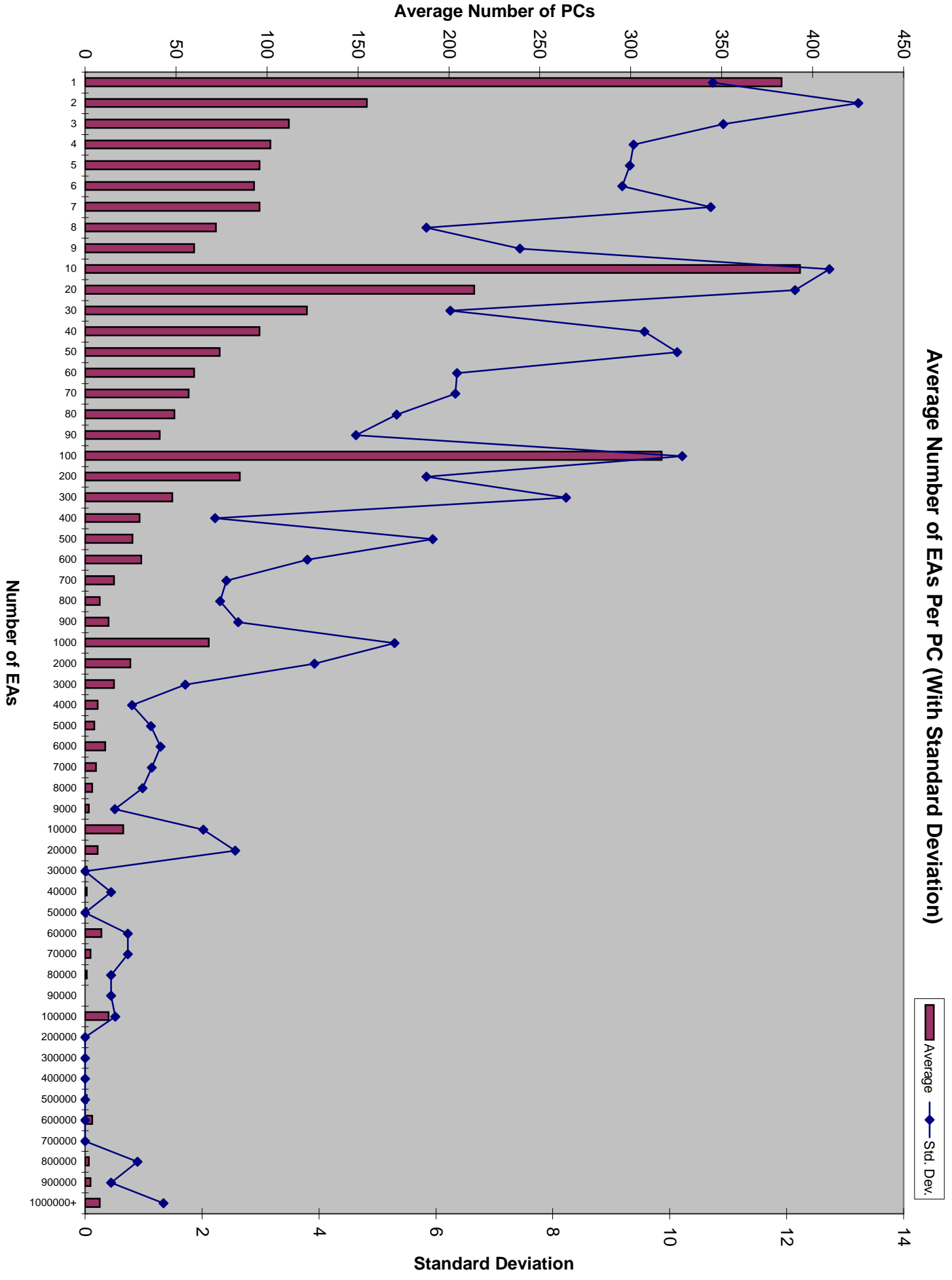


183. equake - Chart



Average Number of EAs Per PC (With Standard Deviation)

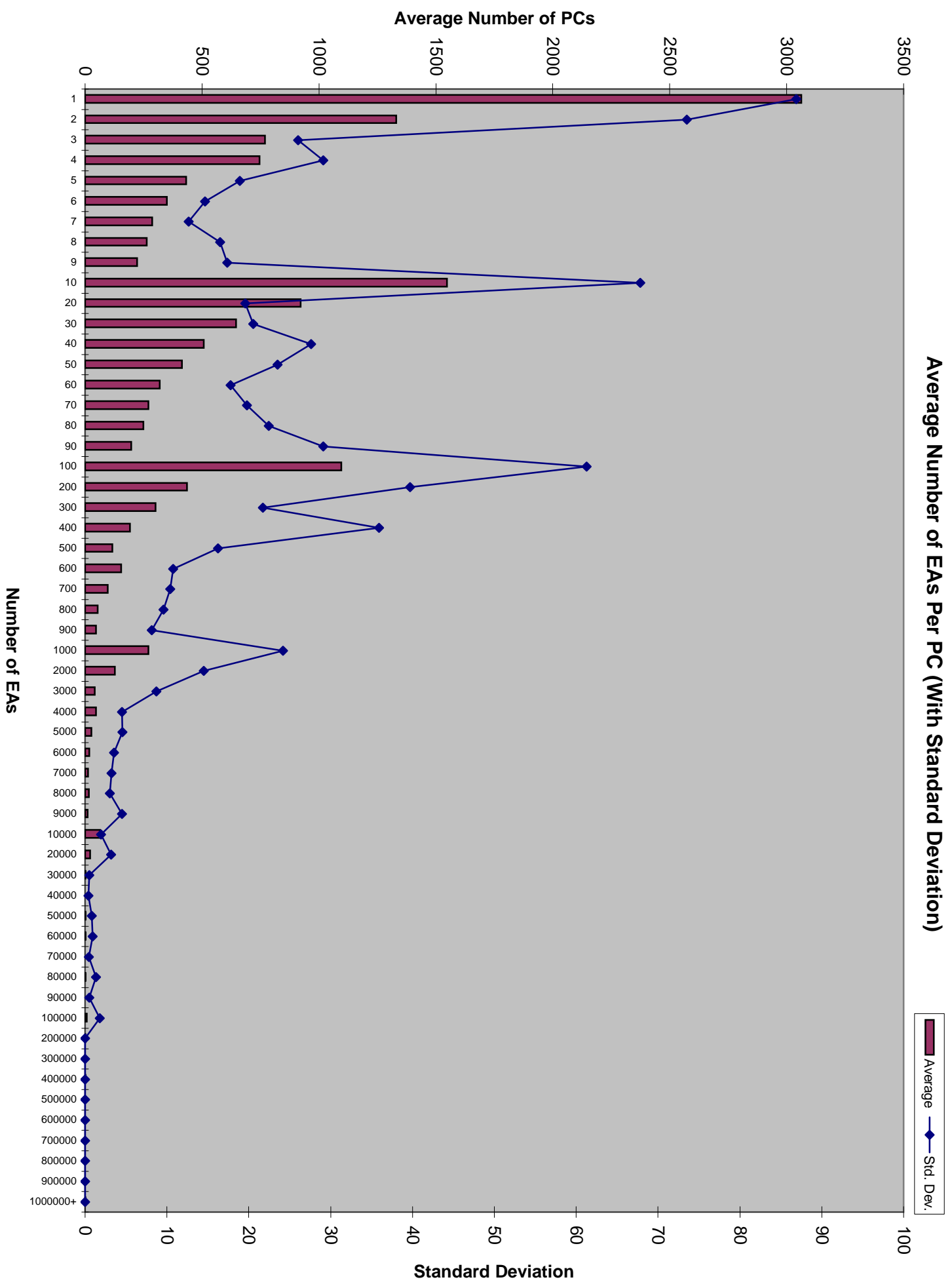
Average (dark red bar) Std. Dev. (blue line with diamond)



Average Number of EAS Per PC (With Standard Deviation)

Average (dark red bar) Std. Dev. (blue line with diamond)





Average Number of EAS Per PC (With Standard Deviation)

Average (bar) Std. Dev. (line)

